



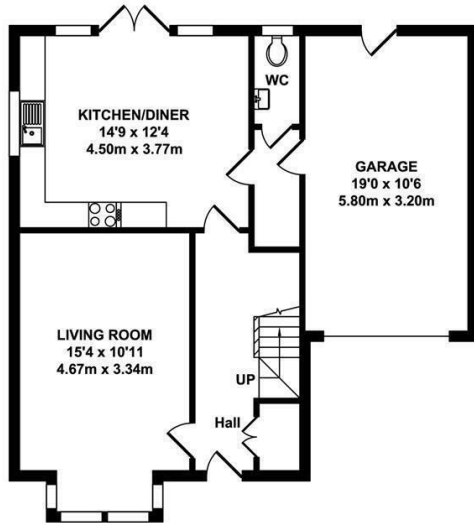
Collier Street

Yalding, Maidstone ME18 6FH

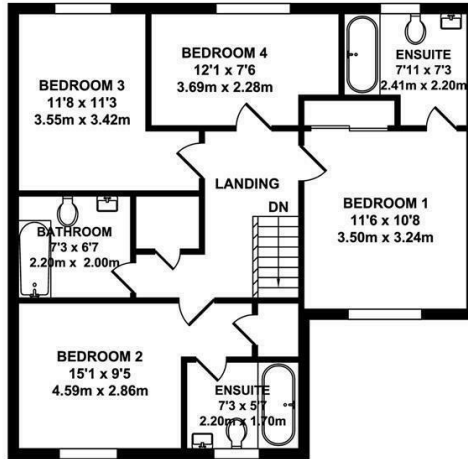
- Fantastic Rural Setting
- Small Development of Homes
- Two En-suite Bathrooms plus a Family Bathroom
- GUIDE PRICE: £600,000-£650,000
- A FOUR Bedroom Detached Property
- Immaculate Presentation
- Must View Internally

Guide Price £600,000 Freehold

Local Authority
Council Tax Band F
EPC Rating B



GROUND FLOOR
APPROX. FLOOR AREA
712 SQ.FT.
(66.19 SQ.M.)



FIRST FLOOR
APPROX. FLOOR AREA
712 SQ.FT.
(66.11 SQ.M.)

TOTAL APPROX. FLOOR AREA 1424 SQ.FT. (132.30 SQ.M.)

Whilst every attempt has been made to ensure the accuracy of the floor plan contained here, measurements of doors, windows, rooms and any other items are approximate and no responsibility is taken for any error, omission or mis-statement. This plan is for illustrative purposes only and should be used as such by any prospective purchaser. The services, systems and appliances shown have not been tested and no guarantee as to their operability or efficiency can be given.
Zome Media ©2024



Malling Office
777 London Road, Larkfield, Aylesford,
Kent, ME20 6DE

Contact
01732 875706
larkfieldsales@simonmiller.co.uk
<https://simonmiller.co.uk/>

Agents Note: Whilst every care has been taken to prepare these particulars, they are for guidance purposes only. All measurements are approximate and for general guidance purposes only and whilst every care has been taken to ensure accuracy, they should not be relied upon and potential buyers/tenants are advised to recheck the measurements.