

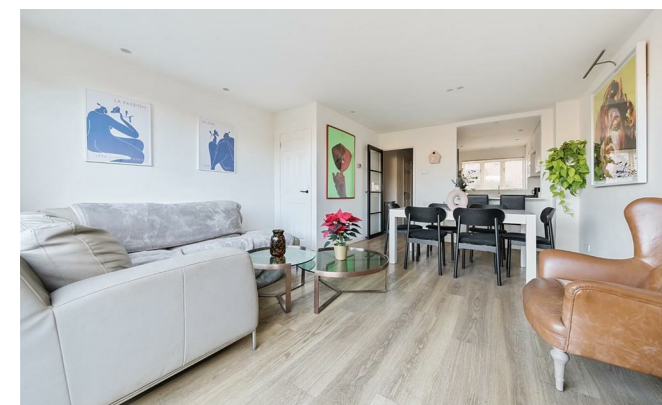


Middle Mill Road

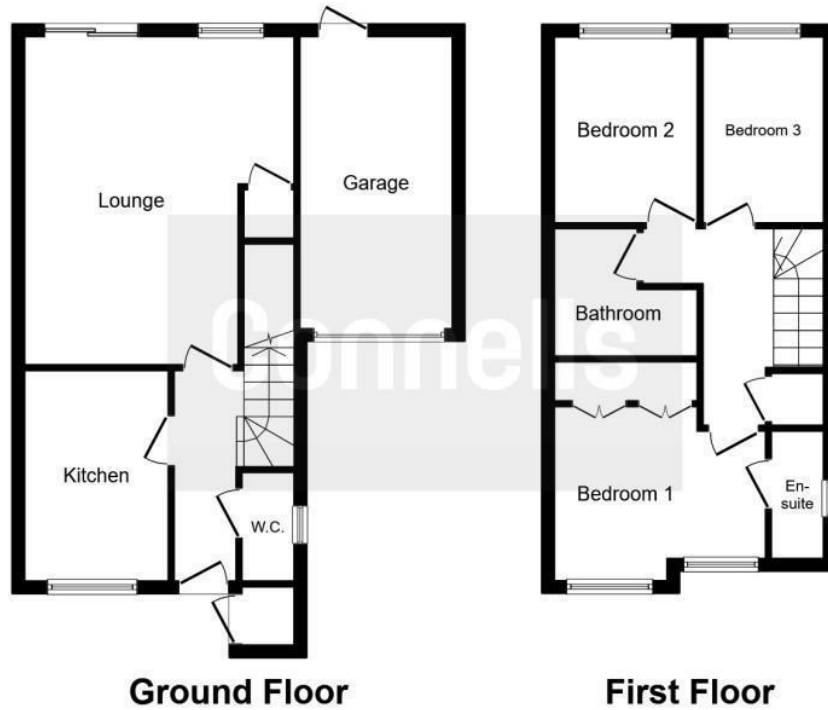
East Malling, West Malling ME19 6PS

- GUIDE PRICE: £400,000-£425,000
- Upgraded and Improved Interior
- Own Driveway and Garage
- A Three Bedroom Family Home
- Replaced Kitchen and Bathroom
- Popular Kentish Village

Guide Price £400,000 Freehold



Local Authority
Council Tax Band D
EPC Rating C



This floor plan is for illustrative purposes only. It is not drawn to scale. Any measurements, floor areas (including any total floor area), openings and orientation are approximate. No details are guaranteed, they cannot be relied upon for any purpose and they do not form part of any agreement. No liability is taken for any error, omission or misstatement. A party must rely upon its own inspection(s).
Plan produced for Connells. Powered by www.focalagent.com

Malling Office

777 London Road, Larkfield, Aylesford,
Kent, ME20 6DE

Contact

01732 875706
larkfieldsales@simonmiller.co.uk
<https://simonmiller.co.uk/>

Agents Note: Whilst every care has been taken to prepare these particulars, they are for guidance purposes only. All measurements are approximate and for general guidance purposes only and whilst every care has been taken to ensure accuracy, they should not be relied upon and potential buyers/tenants are advised to recheck the measurements.

