



Derby Drive

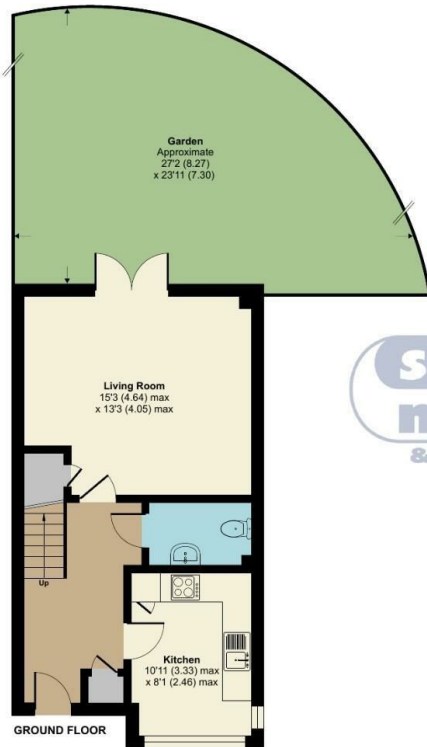
Leybourne, West Malling ME19 5FJ

- GUIDE PRICE £375,000 - £400,000
- Popular Leybourne Chase Location
 - Private Driveway & Garage
- Low Maintenance Rear Garden
 - Ready To View NOW!
- CHAIN FREE!!
- Two En-Suite's
- Downstairs W/C
- Kitchen With Integrated Appliances

Price Guide £375,000 Freehold



Local Authority
Council Tax Band D
EPC Rating C

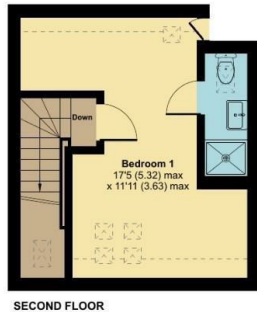


Derby Drive, Leybourne, West Malling, ME19

Approximate Area = 1075 sq ft / 99.8 sq m
Limited Use Area(s) = 28 sq ft / 2.6 sq m
Total = 1103 sq ft / 102.4 sq m
For identification only - Not to scale



Denotes restricted head height



Floor plan produced in accordance with RICS Property Measurement 2nd Edition, Incorporating International Property Measurement Standards (IPMS2 Residential). © n3chem 2024. Produced for Simon Miller & Company. REF: 1225965



Malling Office
777 London Road, Larkfield, Aylesford,
Kent, ME20 6DE

Contact
01732 875706
larkfieldsales@simonmiller.co.uk
<https://simonmiller.co.uk/>

Agents Note: Whilst every care has been taken to prepare these particulars, they are for guidance purposes only. All measurements are approximate and for general guidance purposes only and whilst every care has been taken to ensure accuracy, they should not be relied upon and potential buyers/tenants are advised to recheck the measurements.