

PERIOD HOMES

By Simon Miller



Smithers Lane

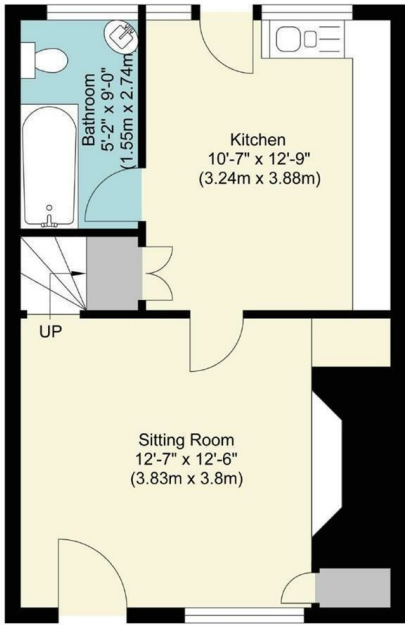
East Peckham, Tonbridge TN12 5HR

- 2 Bedroom Characterful Cottage
- Appointed Over 3 Floors
- Large Secret Garden
- Sitting Room w/Inglenook Fireplace
- Village Location
- Grade II Listed

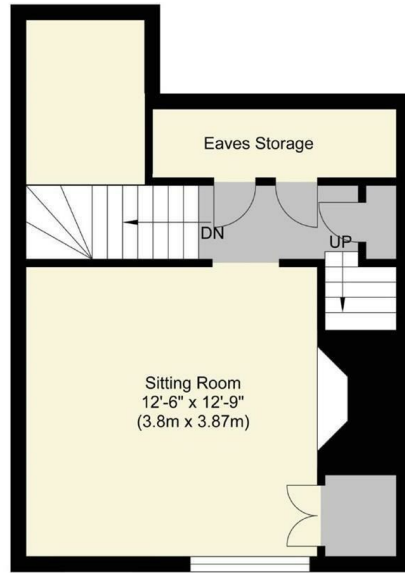
£350,000 Freehold



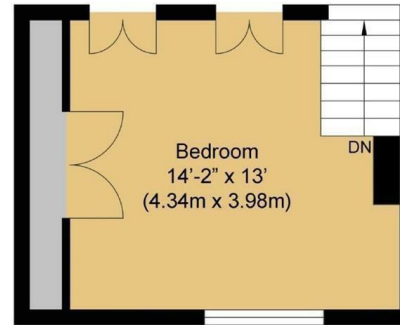
Local Authority
Council Tax Band C
EPC Rating D



Ground Floor
Approx Floor
Area 37.54 sq. m



First Floor
Approx Floor
Area 30.41 sq. m



Second Floor
Approx Floor
Area 18.50 sq. m

Total Floor Area
930.54 Sqft
(86.45 Sqm)



Period Homes by Simon Miller Office
Weald, 5 High Street, Headcorn, Ashford,
Kent, TN27 9NH

Contact

01622 850888
admin@periodhomesbysimonmiller.co.uk
<https://simonmiller.co.uk/period-homes/>

Agents Note: Whilst every care has been taken to prepare these particulars, they are for guidance purposes only. All measurements are approximate and for general guidance purposes only and whilst every care has been taken to ensure accuracy, they should not be relied upon and potential buyers/tenants are advised to recheck the measurements.