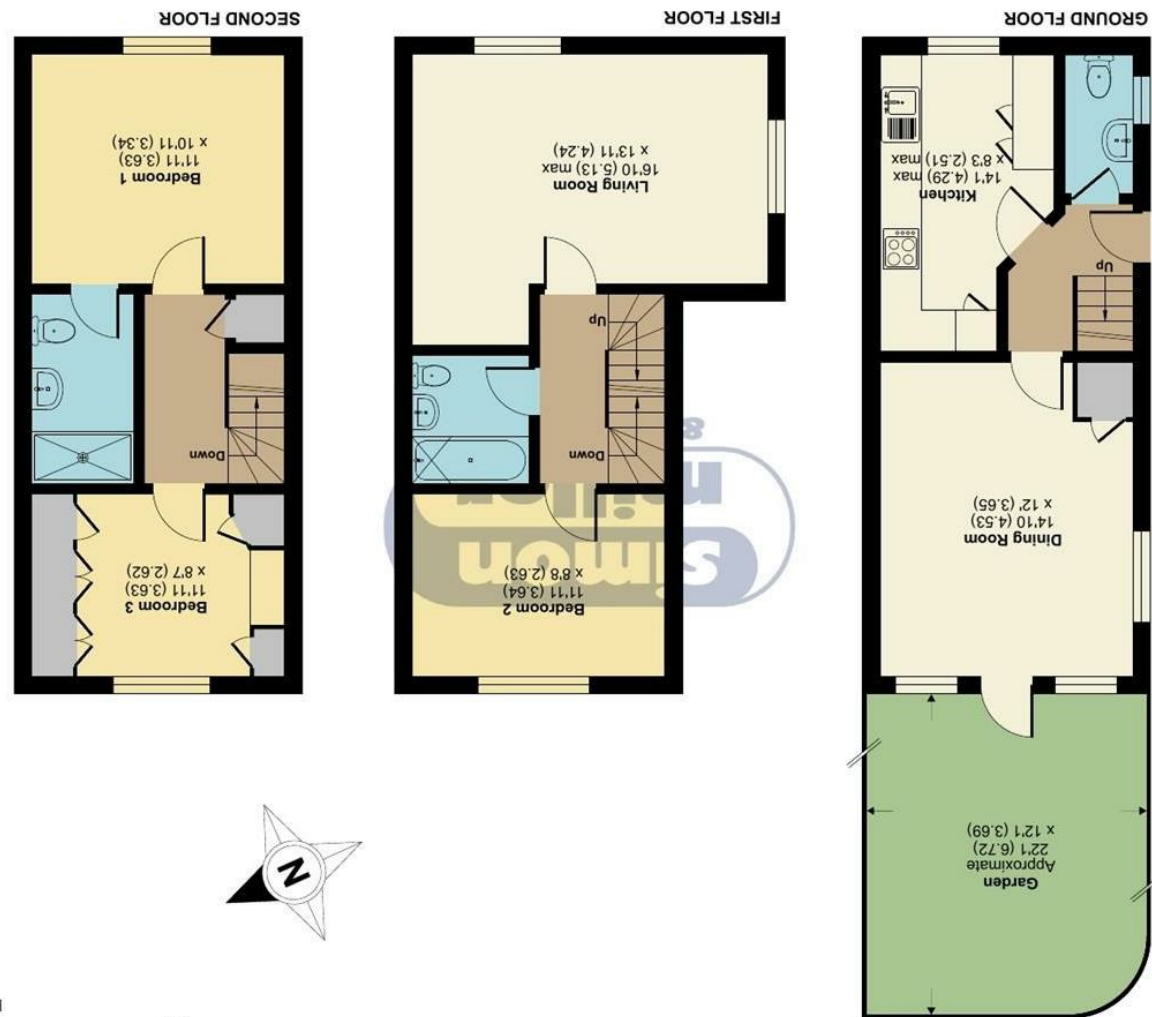


Floor plan produced in accordance with RICS Property Measurement 2nd Edition, incorporating International Property Measurement Standards (IPMS2 Residential). © nchecom 2024. REF: 1227294



**Fennel Close, Maidstone, ME16**  
 Approximate Area = 1109 sq ft / 103 sq m  
 For identification only - Not to scale

**80 Fennel Close, Maidstone, ME16 0FG**

**Price Guide £400,000**  
**EPC RATING: C**







Situated in the highly desirable Fennel Close, this modern three-bedroom townhouse offers a perfect combination of contemporary living and convenience. The ground floor comprises a well-equipped kitchen, a separate dining area, a cloakroom toilet, and access to the south-facing, low-maintenance rear garden. Additionally, residents benefit from the use of communal gardens, providing even more outdoor space to enjoy.

On the first floor, there is a spacious lounge, a double bedroom, and a family bathroom. The top floor features two further bedrooms, including the master with an en-suite shower room.

Outside, the property includes a driveway with parking for two cars, a valuable feature in this sought-after location. Families will appreciate the close proximity to Maidstone Hospital, popular schools, and local amenities. With excellent motorway links nearby, this property offers a fantastic balance of modern comfort and accessibility.

### MATERIAL INFORMATION

**Freehold**  
**Council Tax Band C**  
**EPC Report C**



• GUIDE PRICE £400,000 - £410,000 • Modern Three Bedroom Townhouse • En-Suite To Master Bedroom & Family Bathroom • Lounge & Seperate Dining Area • South Facing, Low Maintenance Rear Garden • Use Of Communal Gardens • Sought After Location • Close To Maidstone Hospital, Popular Schools & Amenities • Easy Access To Motorway Links

Agents Note: All dimensions are approximate and quoted for guidance only. Reference to appliances, fixtures, fittings and services does not imply that they are necessarily in good condition, fit the purpose or are in working order. Interested parties are advised to obtain verification from their Solicitors as to the Freehold/Leasehold status of the property and confirmation regarding the condition of any fixtures and fittings included in the sale.

11, COLMAN HOUSE, MAIDSTONE, KENT, ME14 1DJ | 01622 691255 | MAIDSTONESALES@SIMONMILLER.CO.UK