



## Watts Close , Snodland ME6 5TA

- WONDERFUL RIVERFRONT LOCATION
  - 2 Double Bedrooms
  - Parking to Rear
- 2 Bedroom End of Terrace Home
  - Front and Rear Gardens
  - A MUST VIEW

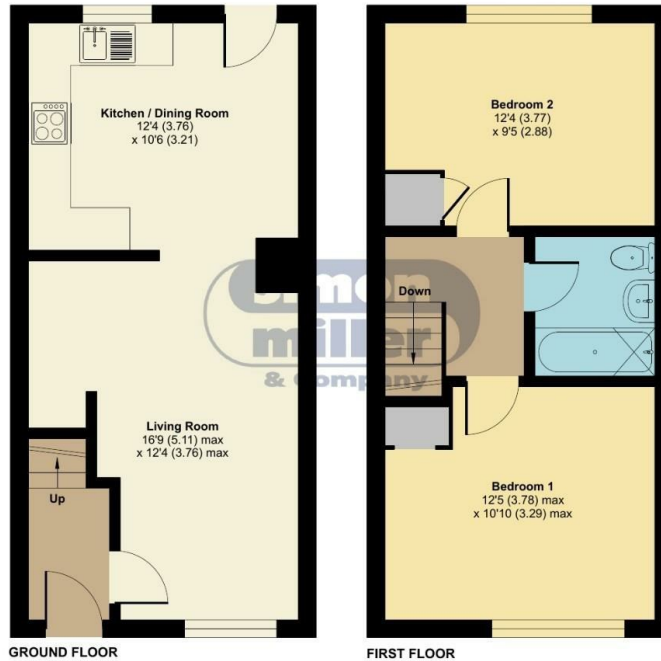
**Offers In Excess Of £290,000 Freehold**

Local Authority  
Council Tax Band C  
EPC Rating C

## Watts Close, Snodland, ME6

Approximate Area = 694 sq ft / 64.4 sq m

For identification only - Not to scale



Floor plan produced in accordance with RICS Property Measurement 2nd Edition, Incorporating International Property Measurement Standards (IPMS2 Residential). © nchecom 2025. Produced for Simon Miller & Company. REF: 1232900

### Malling Office

777 London Road, Larkfield, Aylesford,  
Kent, ME20 6DE

### Contact

01732 875706  
larkfieldsales@simonmiller.co.uk  
<https://simonmiller.co.uk/>

Agents Note: Whilst every care has been taken to prepare these particulars, they are for guidance purposes only. All measurements are approximate and for general guidance purposes only and whilst every care has been taken to ensure accuracy, they should not be relied upon and potential buyers/tenants are advised to recheck the measurements.

