



Plover Road

Larkfield, Aylesford ME20 6LA

- GUIDE PRICE: £350,000-£370,000
- Popular Residential Location
- Own Driveway, Parking and Garage
- A Three Bedroom Semi Detached Family Home
- Does Require Some Modernizing
- NO ONWARD CHAIN

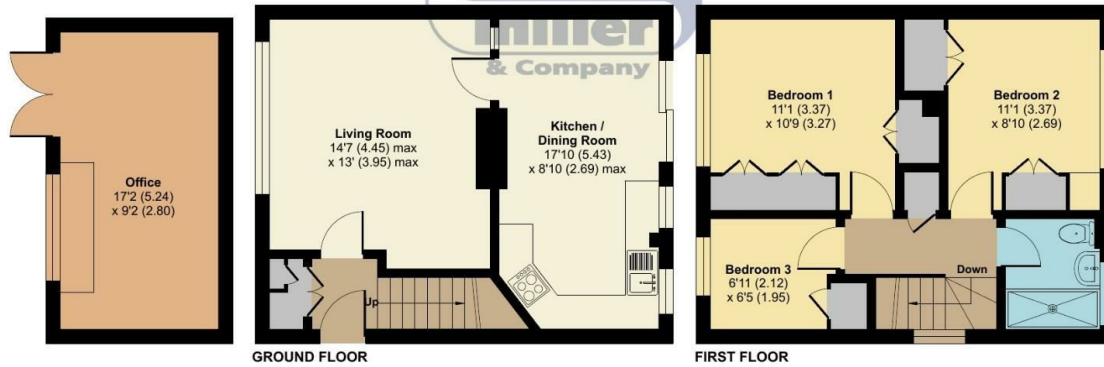
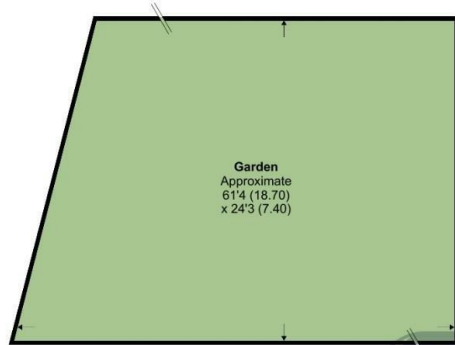
Guide Price £350,000 Freehold



Local Authority
Council Tax Band C
EPC Rating C

Plover Road, Larkfield, Aylesford, ME20

Approximate Area = 816 sq ft / 75.8 sq m
Office = 158 sq ft / 14.6 sq m
Total = 974 sq ft / 90.4 sq m
For identification only - Not to scale



Floor plan produced in accordance with RICS Property Measurement 2nd Edition, Incorporating International Property Measurement Standards (IPMS2 Residential). © n3cheom 2025. Produced for Simon Miller & Company. REF: 1234272



Mailing Office
777 London Road, Larkfield, Aylesford,
Kent, ME20 6DE

Contact
01732 875706
larkfieldsales@simonmiller.co.uk
<https://simonmiller.co.uk/>

Agents Note: Whilst every care has been taken to prepare these particulars, they are for guidance purposes only. All measurements are approximate and for general guidance purposes only and whilst every care has been taken to ensure accuracy, they should not be relied upon and potential buyers/tenants are advised to recheck the measurements.