



Birling Road , Snodland ME6 5EA

- END OF CHAIN!
- Driveway For Approx. 6 Cars
- Modern Bathroom & Kitchen
- Heavily Extended
- Good Condition Throughout
- Large Outdoor Cabin

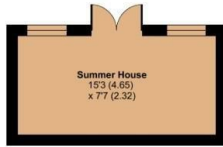
Offers In Excess Of £475,000 Freehold



Local Authority
Council Tax Band E
EPC Rating D



FIRST FLOOR



OUTBUILDING

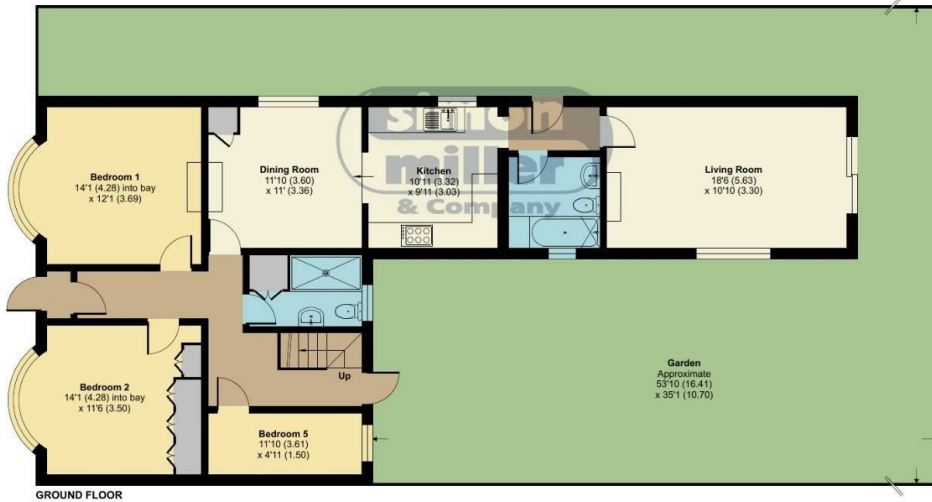
Denotes restricted
head height



Birlinging Road, Snodland, ME6

Approximate Area = 1338 sq ft / 124.3 sq m
Limited Use Area(s) = 17 sq ft / 1.5 sq m
Outbuilding = 116 sq ft / 10.7 sq m
Total = 1471 sq ft / 136.5 sq m

For identification only - Not to scale



GROUND FLOOR

Floor plan produced in accordance with RICS Property Measurement 2nd Edition,
Incorporating International Property Measurement Standards (IPMS2 Residential). © nichecom 2025.
Produced for Simon Miller & Company. REF: 1232840



Malling Office

777 London Road, Larkfield, Aylesford,
Kent, ME20 6DE

Contact

01732 875706
larkfieldsales@simonmiller.co.uk
<https://simonmiller.co.uk/>

Agents Note: Whilst every care has been taken to prepare these particulars, they are for guidance purposes only. All measurements are approximate and for general guidance purposes only and whilst every care has been taken to ensure accuracy, they should not be relied upon and potential buyers/tenants are advised to recheck the measurements.