



## The Lakes

Larkfield, Aylesford ME20 6SJ

- CHAIN FREE!!
- Flexible Family Living Accommodation
  - Garage And Off Road Parking
  - Appointed Over Three Floors
- Lake Views
- Two En Suites
- Open Plan Kitchen / Diner
- Ready To View NOW!

**£475,000 Freehold**



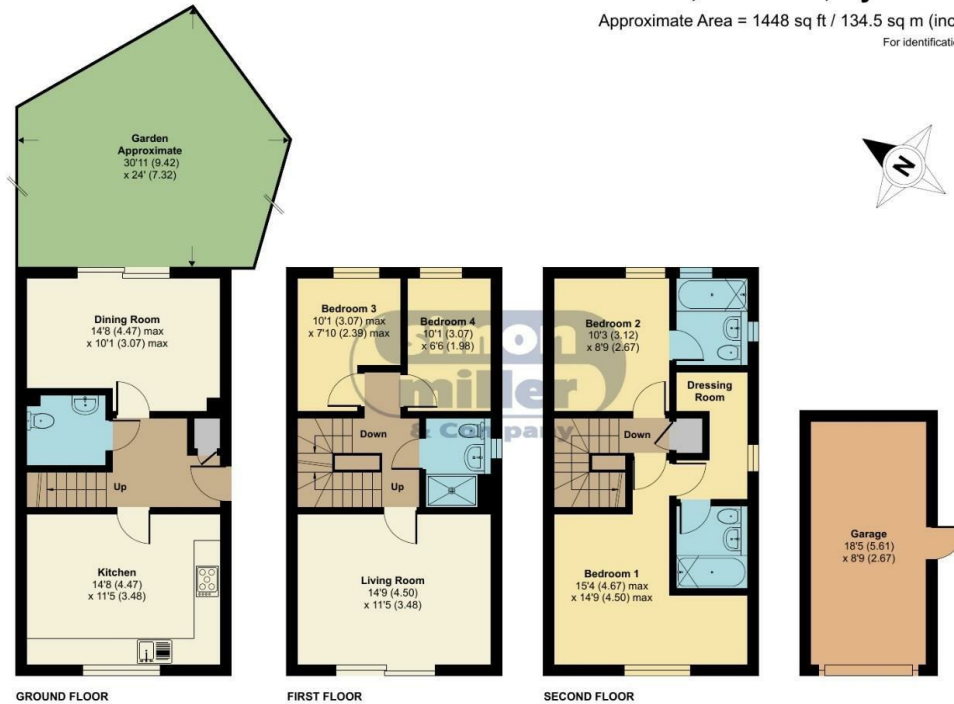


Local Authority  
Council Tax Band F  
EPC Rating C

## The Lakes, Larkfield, Aylesford, ME20

Approximate Area = 1448 sq ft / 134.5 sq m (includes garage)

For identification only - Not to scale



Floor plan produced in accordance with RICS Property Measurement Standards incorporating International Property Measurement Standards (IPMS2 Residential). © nichecom 2023. Produced for Simon Miller & Company. REF: 976273

### Malling Office

777 London Road, Larkfield, Aylesford,  
Kent, ME20 6DE

### Contact

01732 875706  
larkfieldsales@simonmiller.co.uk  
<https://simonmiller.co.uk/>

Agents Note: Whilst every care has been taken to prepare these particulars, they are for guidance purposes only. All measurements are approximate and for general guidance purposes only and whilst every care has been taken to ensure accuracy, they should not be relied upon and potential buyers/tenants are advised to recheck the measurements.