



Walters Close , Snodland ME6 5GY

- Immaculately Presented Throughout
 - 2 Allocated Parking Spaces
 - Lift Access
 - Open Plan Layout
- Master Bedroom With En Suite
- Kitchen With Integrated Appliances
 - Balcony With Lake Views
 - Two Double Bedrooms

£350,000 Leasehold

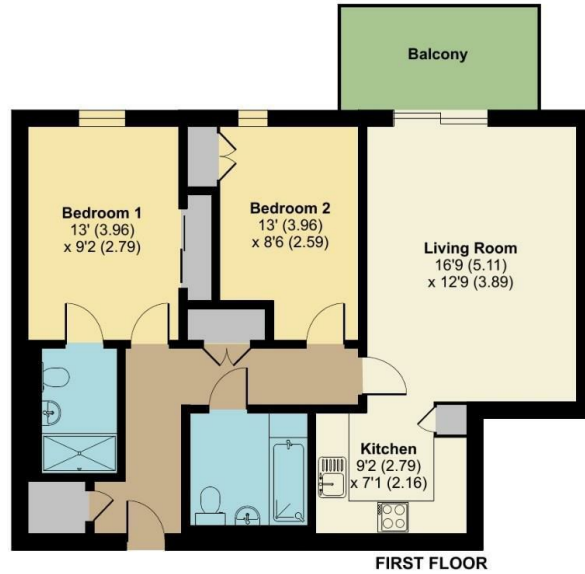
Local Authority
Council Tax Band C
EPC Rating B



Walters Close, Snodland, ME6

Approximate Area = 753 sq ft / 70 sq m

For identification only - Not to scale



 Floor plan produced in accordance with RICS Property Measurement 2nd Edition, Incorporating International Property Measurement Standards (IPMS2 Residential). © n3cheom 2025. Produced for Simon Miller & Company. REF: 1248012

Malling Office

777 London Road, Larkfield, Aylesford,
Kent, ME20 6DE

Contact

01732 875706
larkfieldsales@simonmiller.co.uk
<https://simonmiller.co.uk/>

Agents Note: Whilst every care has been taken to prepare these particulars, they are for guidance purposes only. All measurements are approximate and for general guidance purposes only and whilst every care has been taken to ensure accuracy, they should not be relied upon and potential buyers/tenants are advised to recheck the measurements.