

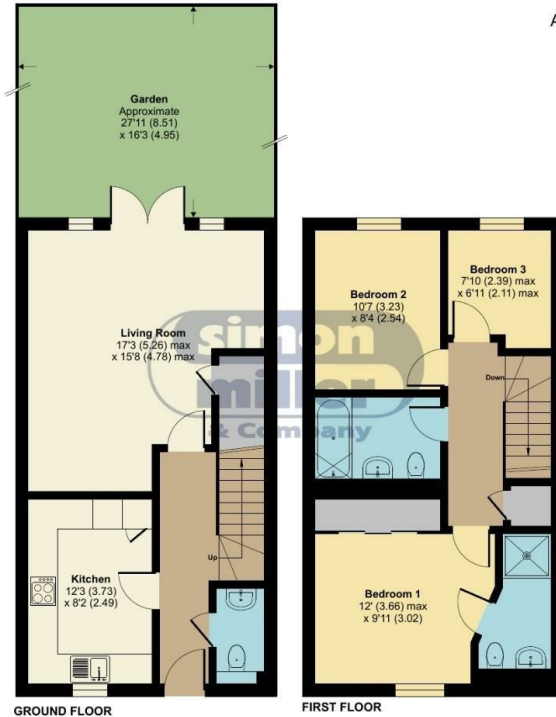


## Ballard Road , Snodland ME6 5FW

- Three Bedroom Modern Family Home
  - Off Road Parking
  - Downstairs Cloakroom
  - Open Plan Lounge / Diner
- South Facing Rear Garden
- Master Bedroom With En-Suite
  - Two Double Bedrooms
- Low Maintenance Rear Garden

**£400,000 Freehold**

Local Authority  
Council Tax Band D  
EPC Rating B



## Ballard Road, Snodland, ME6

Approximate Area = 940 sq ft / 87.3 sq m

For identification only - Not to scale



Floor plan produced in accordance with RICS Property Measurement 2nd Edition, Incorporating International Property Measurement Standards (IPMS2 Residential). © n3cheom 2025. Produced for Simon Miller & Company. REF: 1242733

### Mailing Office

777 London Road, Larkfield, Aylesford,  
Kent, ME20 6DE

### Contact

01732 875706  
larkfieldsales@simonmiller.co.uk  
<https://simonmiller.co.uk/>

Agents Note: Whilst every care has been taken to prepare these particulars, they are for guidance purposes only. All measurements are approximate and for general guidance purposes only and whilst every care has been taken to ensure accuracy, they should not be relied upon and potential buyers/tenants are advised to recheck the measurements.