



## Pinewood Close

Leybourne, West Malling ME19 5FH

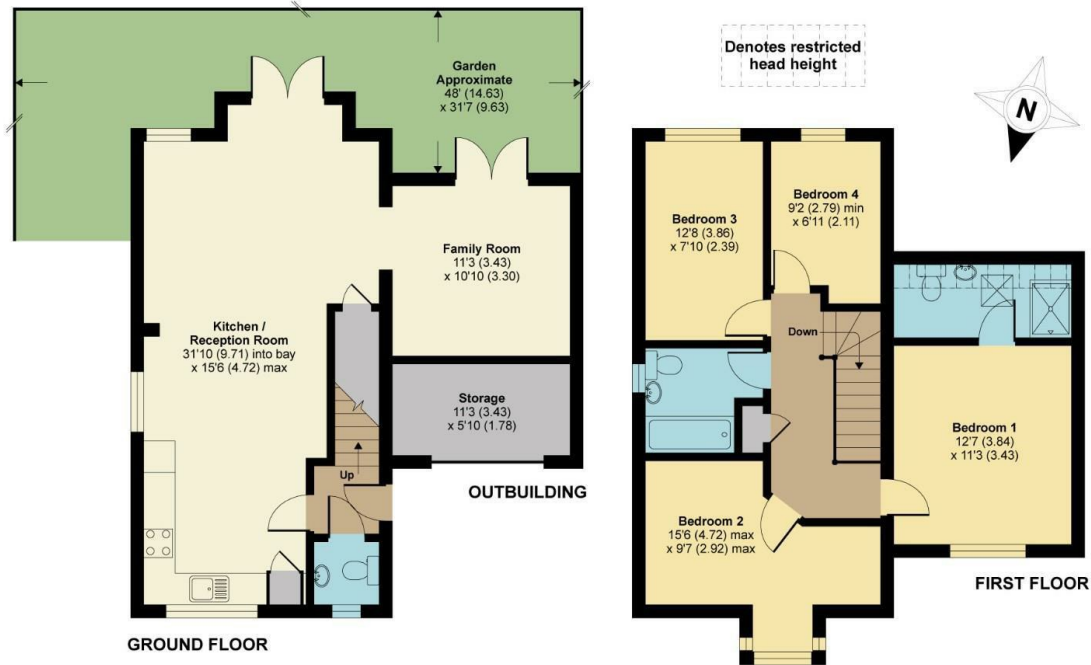
- GUIDE PRICE: £475,000-£490,000
- Master Bedroom With En Suite
- Four Spacious Bedrooms
- Kitchen With Fully Integrated Appliances
- Chain Free
- Downstairs Cloakroom
- Open Plan Layout
- Ready To View NOW!

**Guide Price £475,000 Freehold**

Local Authority  
Council Tax Band E  
EPC Rating C

## Pinewood Close, Leybourne, West Malling, ME19

APPROX. GROSS INTERNAL FLOOR AREA 1261 SQ FT 117.1 SQ METRES (EXCLUDES RESTRICTED HEAD HEIGHT & OUTBUILDING)



Whilst every attempt has been made to ensure the accuracy of the floor plan contained here, measurements of doors, windows and rooms are approximate and no responsibility is taken for any error, omission or misstatement. These plans are for representation purposes only as defined by RICS Code of Measuring Practice and should be used as such by any prospective purchaser. Specifically no guarantee is given on the total square footage of the property if quoted on this plan. Any figure given is for initial guidance only and should not be relied on as a basis of valuation.

Copyright nichecom.co.uk 2019 Produced for Simon Miller & Company REF : 462099



### Malling Office

777 London Road, Larkfield, Aylesford,  
Kent, ME20 6DE

### Contact

01732 875706  
larkfieldsales@simonmiller.co.uk  
<https://simonmiller.co.uk/>

Agents Note: Whilst every care has been taken to prepare these particulars, they are for guidance purposes only. All measurements are approximate and for general guidance purposes only and whilst every care has been taken to ensure accuracy, they should not be relied upon and potential buyers/tenants are advised to recheck the measurements.