



Lettings



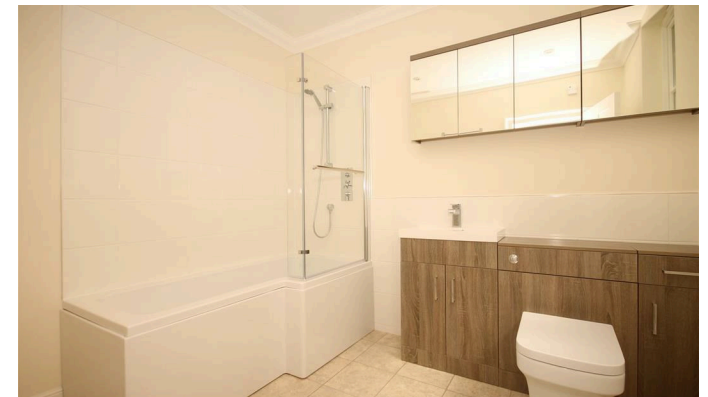
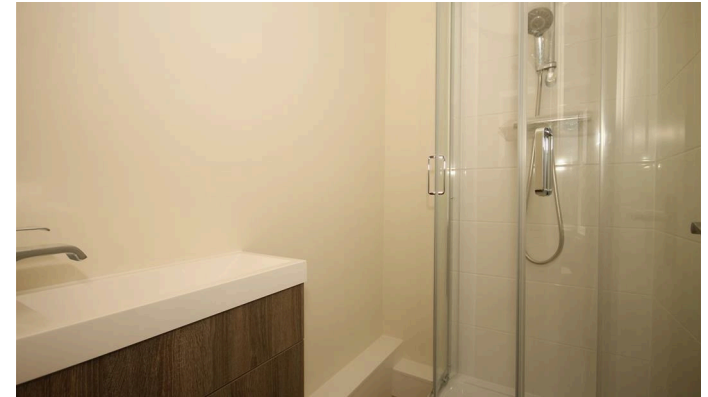
Ashford Road

Maidstone, ME14 5DA

- Stunning End of Terrace House
 - Beautiful Kitchen
 - Communal Garden
 - Great Commuter Links
 - Available Mid March
- Modern / Contemporary Accommodation
 - Allocated Parking For 2 Cars
 - Walking Distance to Town Centre
 - Good Local Amenities

£1,250 PCM

Local Authority Maidstone
Borough Council
Council Tax Band C
EPC Rating D



Lettings Office

Lettings Division, 779 London Road,
Larkfield, Aylesford, Kent, ME20 6DE

Contact

01732 875777
lettings@simonmiller.co.uk
<https://simonmiller.co.uk/landlo/services/>

Agents Note: Whilst every care has been taken to prepare these particulars, they are for guidance purposes only. All measurements are approximate and for general guidance purposes only and whilst every care has been taken to ensure accuracy, they should not be relied upon and potential buyers/tenants are advised to recheck the measurements.