



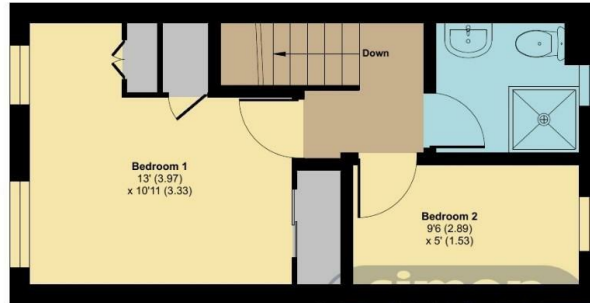
## Ostlers Court

, Snodland ME6 5NF

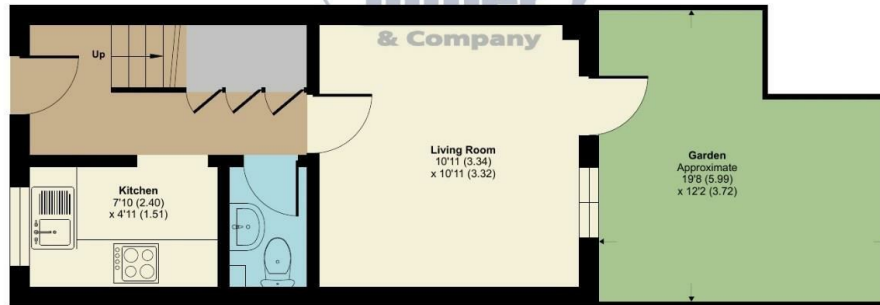
- A Two Bedroom Home
- Own Manageable Rear Garden
- Does Require Some Moderising
- AVAILABLE TO PEOPLE AGED 54 AND ABOVE
- Close to Local Amenities
- VACANT POSSESSION AVAILABLE

**£185,000 Freehold**

Local Authority  
Council Tax Band B  
EPC Rating C



FIRST FLOOR



GROUND FLOOR

Floor plan produced in accordance with RICS Property Measurement 2nd Edition,  
Incorporating International Property Measurement Standards (IPMS2 Residential). © nichcom 2025.  
Produced for Simon Miller & Company. REF: 1243659

## Ostlers Court, Snodland, ME6

Approximate Area = 504 sq ft / 46.8 sq m

For identification only - Not to scale



### Malling Office

777 London Road, Larkfield, Aylesford,  
Kent, ME20 6DE

### Contact

01732 875706  
larkfieldsales@simonmiller.co.uk  
<https://simonmiller.co.uk/>

Agents Note: Whilst every care has been taken to prepare these particulars, they are for guidance purposes only. All measurements are approximate and for general guidance purposes only and whilst every care has been taken to ensure accuracy, they should not be relied upon and potential buyers/tenants are advised to recheck the measurements.