



Wills Crescent

Leybourne, West Malling ME19 5GJ

- A TWO Bedroom Apartment
- Two Double Bedrooms
- DIRECT VIEWS OVER LEYBOURNE GRANGE
- GROUND FLOOR Position
- Allocated Parking Space
- Close to West Malling High Street

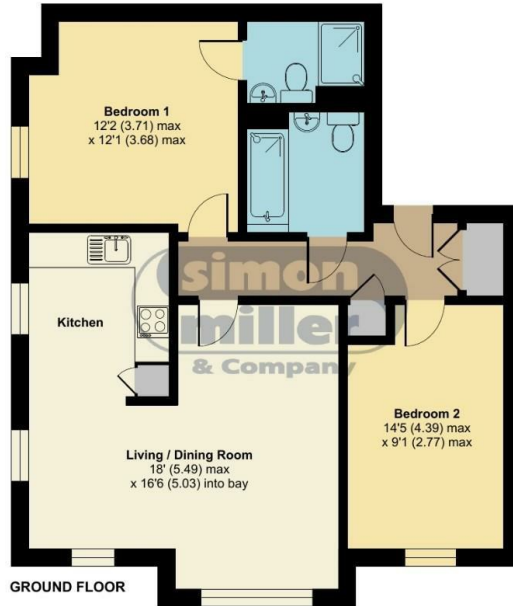
Offers In The Region Of £260,000 Leasehold

Local Authority
Council Tax Band C
EPC Rating B



Wills Crescent, Leybourne, West Malling, ME19

Approximate Area = 766 sq ft / 71.2 sq m
For identification only - Not to scale



Floor plan produced in accordance with RICS Property Measurement 2nd Edition, Incorporating International Property Measurement Standards (IPMS2 Residential). © n3cheom 2025. Produced for Simon Miller & Company. REF: 1239088

Malling Office

777 London Road, Larkfield, Aylesford,
Kent, ME20 6DE

Contact

01732 875706
larkfieldsales@simonmiller.co.uk
<https://simonmiller.co.uk/>

Agents Note: Whilst every care has been taken to prepare these particulars, they are for guidance purposes only. All measurements are approximate and for general guidance purposes only and whilst every care has been taken to ensure accuracy, they should not be relied upon and potential buyers/tenants are advised to recheck the measurements.