



Priory Grove

, Ditton ME20 6BB

- GUIDE PRICE: £400,000-£425,000
 - Newly Fitted En-Suite
 - Private Rear Garden
- Modern Throughout
- Garage & Driveway
- Conservatory To Rear

Price Guide £400,000 Freehold

Local Authority
Council Tax Band D
EPC Rating D

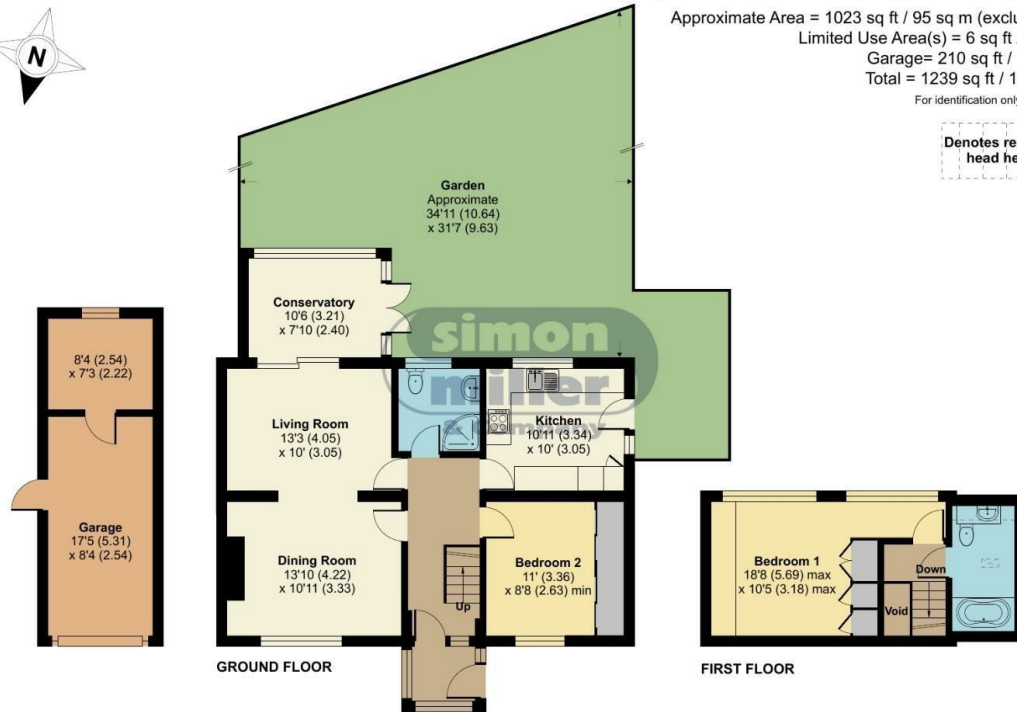


Priory Grove, Ditton, Aylesford, ME20

Approximate Area = 1023 sq ft / 95 sq m (excludes void)
Limited Use Area(s) = 6 sq ft / 0.5 sq m
Garage = 210 sq ft / 19.5 sq m
Total = 1239 sq ft / 115.1 sq m

For identification only - Not to scale

Denotes restricted
head height



Floor plan produced in accordance with RICS Property Measurement 2nd Edition, Incorporating International Property Measurement Standards (IPMS2 Residential). © n3chem 2025. Produced for Simon Miller & Company. REF: 1243367



Malling Office
777 London Road, Larkfield, Aylesford,
Kent, ME20 6DE

Contact
01732 875706
larkfieldsales@simonmiller.co.uk
<https://simonmiller.co.uk/>

Agents Note: Whilst every care has been taken to prepare these particulars, they are for guidance purposes only. All measurements are approximate and for general guidance purposes only and whilst every care has been taken to ensure accuracy, they should not be relied upon and potential buyers/tenants are advised to recheck the measurements.