



Beech Road

East Malling, West Malling ME19 6DJ

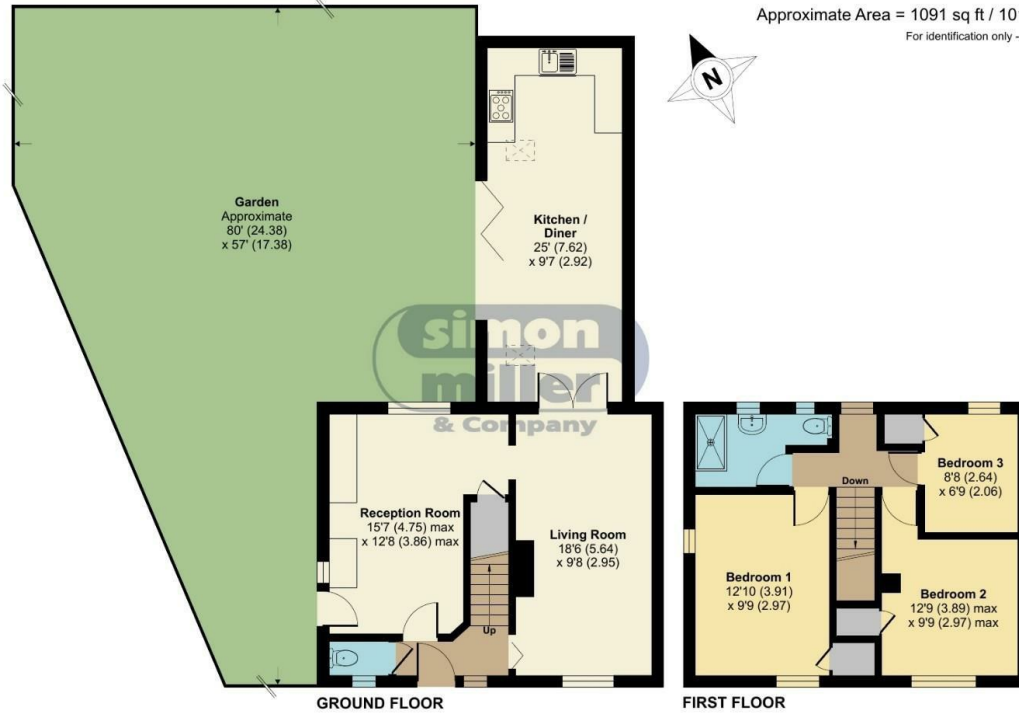
- Three Bedroom Extended Semi Detached Home
- Open Plan / Kitchen Diner With Bi-Fold Doors
 - Two Reception Rooms
- Within Walking Distance Of East / West Malling Station
- Desirable Corner Plot
- Downstairs Cloakroom
 - Large Garden
- Walking Distance To The Malling School

£450,000 Freehold

Local Authority
Council Tax Band C
EPC Rating C

Beech Road, East Malling, West Malling, ME19

Approximate Area = 1091 sq ft / 101.3 sq m
For identification only - Not to scale



Floor plan produced in accordance with RICS Property Measurement 2nd Edition, Incorporating International Property Measurement Standards (IPMS2 Residential). © n3cheom 2025. Produced for Simon Miller & Company. REF: 1239904

Malling Office
777 London Road, Larkfield, Aylesford,
Kent, ME20 6DE

Contact
01732 875706
larkfieldsales@simonmiller.co.uk
<https://simonmiller.co.uk/>

Agents Note: Whilst every care has been taken to prepare these particulars, they are for guidance purposes only. All measurements are approximate and for general guidance purposes only and whilst every care has been taken to ensure accuracy, they should not be relied upon and potential buyers/tenants are advised to recheck the measurements.