



## Larkfield Close

Larkfield, Aylesford ME20 6BH

- OPEN TO OFFERS!
- South Facing 105Ft Rear Garden
- Situated On A Quiet Cul De Sac
  - Summer House
- Two Double Bedroom End Of Terraced Home
  - Lounge With Log Burning Stove
  - Private Driveway And Garage

**£310,000 Freehold**

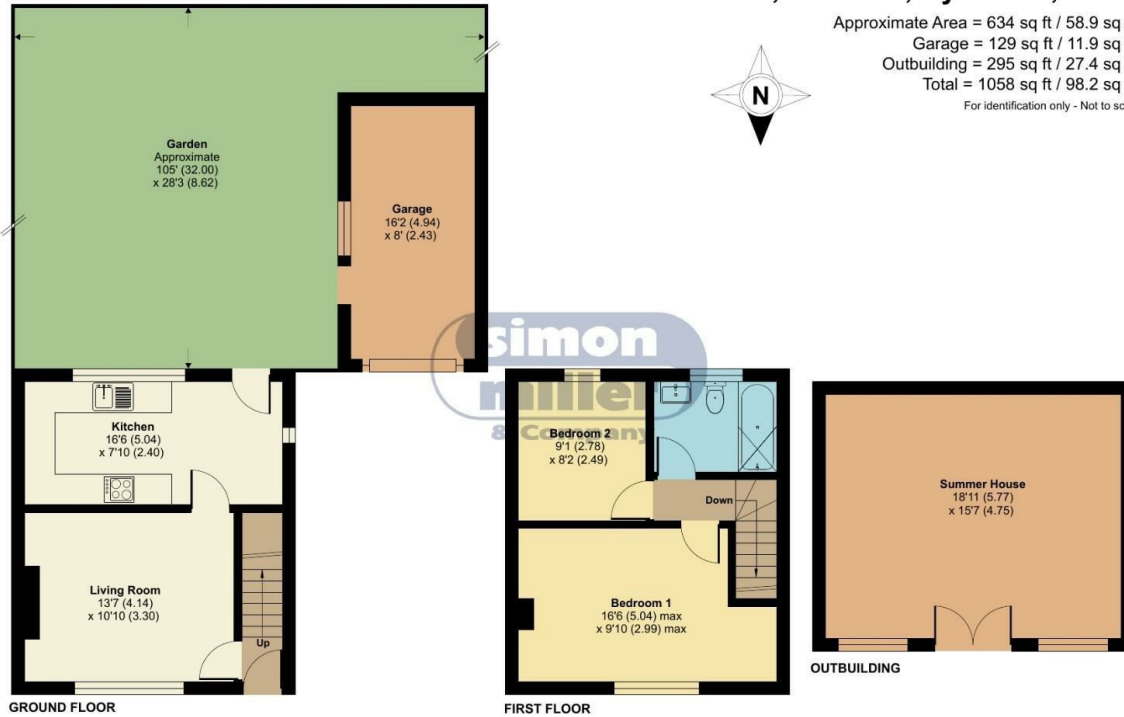


Local Authority  
Council Tax Band C  
EPC Rating D

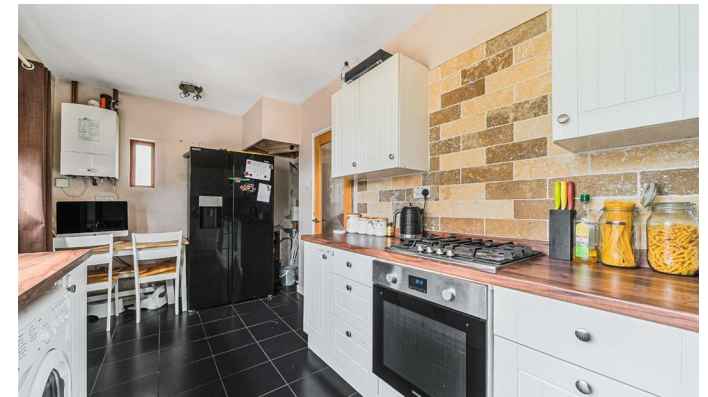
## Larkfield Close, Larkfield, Aylesford, ME20

Approximate Area = 634 sq ft / 58.9 sq m  
Garage = 129 sq ft / 11.9 sq m  
Outbuilding = 295 sq ft / 27.4 sq m  
Total = 1058 sq ft / 98.2 sq m

For identification only - Not to scale



Floor plan produced in accordance with RICS Property Measurement Standards incorporating International Property Measurement Standards (IPMS2 Residential). © nichecom 2024. Produced for Simon Miller & Company. REF: 1103307



**Malling Office**  
777 London Road, Larkfield, Aylesford,  
Kent, ME20 6DE

**Contact**  
01732 875706  
larkfieldsales@simonmiller.co.uk  
<https://simonmiller.co.uk/>

Agents Note: Whilst every care has been taken to prepare these particulars, they are for guidance purposes only. All measurements are approximate and for general guidance purposes only and whilst every care has been taken to ensure accuracy, they should not be relied upon and potential buyers/tenants are advised to recheck the measurements.