



The Glebe

Yalding, Maidstone ME18 6BF

- GUIDE PRICE: £550,000-£575,000
- Detached Garage and Parking to Rear
- Open-plan kitchen with breakfast bar
- An Immaculate FOUR Bedroom Detached Home
- Wonderful Small Enclave of Properties
- Quintessential English Village

Guide Price £550,000 Freehold

Local Authority
Council Tax Band F
EPC Rating B



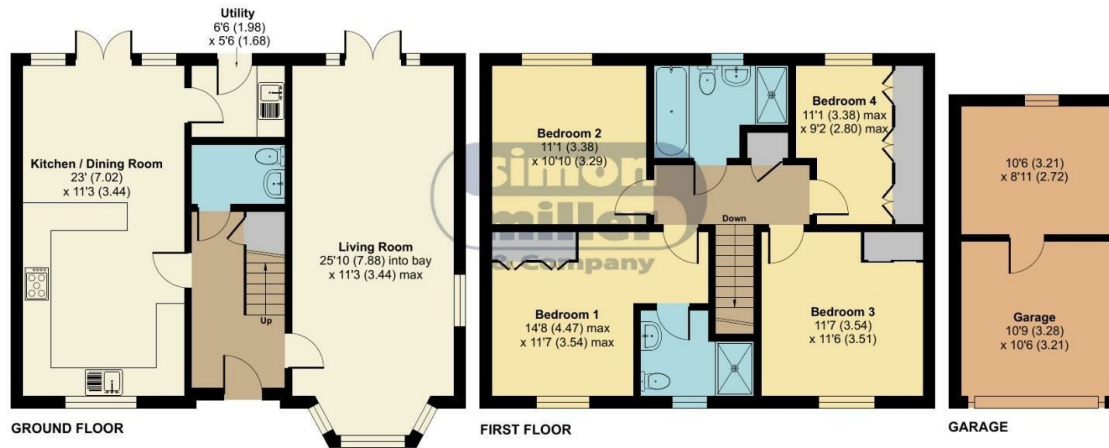
The Glebe, Yalding, Maidstone, ME18

Approximate Area = 1398 sq ft / 129.8 sq m

Garage = 212 sq ft / 19.6 sq m

Total = 1610 sq ft / 149.5 sq m

For identification only - Not to scale



Floor plan produced in accordance with RICS Property Measurement 2nd Edition, Incorporating International Property Measurement Standards (IPMS2 Residential). © nrichcom 2025. Produced for Simon Miller & Company. REF: 1239105

Mailing Office

777 London Road, Larkfield, Aylesford,
Kent, ME20 6DE

Contact

01732 875706
larkfieldsales@simonmiller.co.uk
<https://simonmiller.co.uk/>

Agents Note: Whilst every care has been taken to prepare these particulars, they are for guidance purposes only. All measurements are approximate and for general guidance purposes only and whilst every care has been taken to ensure accuracy, they should not be relied upon and potential buyers/tenants are advised to recheck the measurements.