



London Road

Ditton, Aylesford ME20 6DA

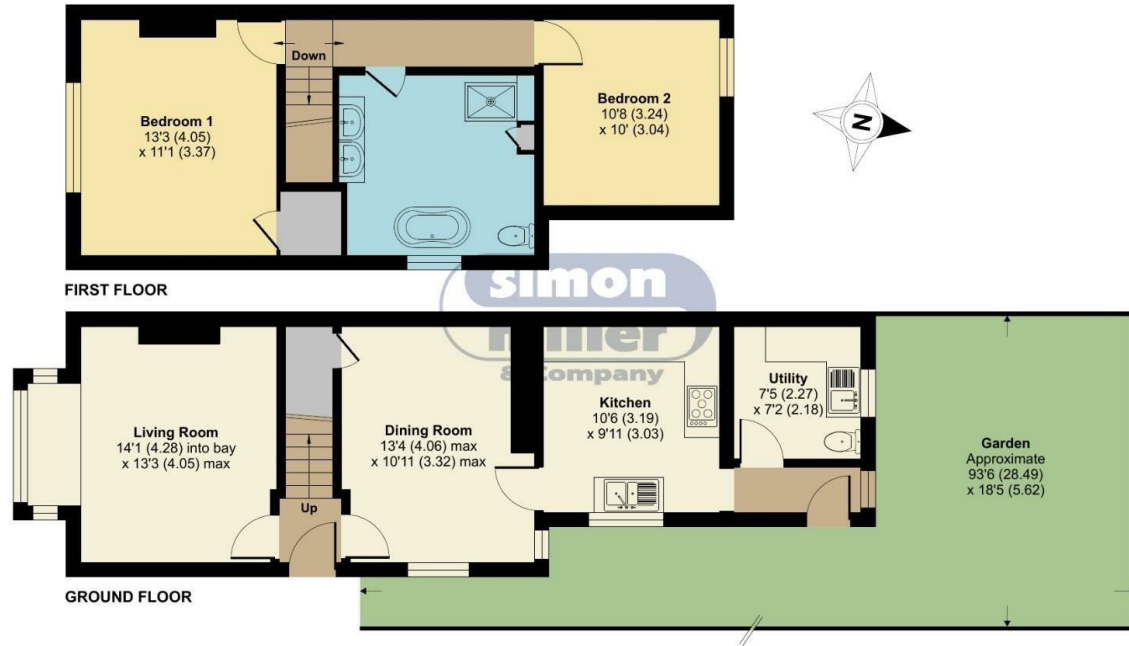
- Charming Two Double Bedroom Character Semi-Detached Home
- Bright & Airy Lounge With Log Burning Stove
 - Utility Room & Downstairs W/C
- Impressive Family Bathroom With Shower & Bath
- 140Ft Rear Garden With Summer House
- Large Driveway For Multiple Cars
 - Two Reception Rooms
- Within Close Proximity Of Amenities

Offers In Excess Of £400,000 Freehold

Local Authority
Council Tax Band D
EPC Rating C

London Road, Aylesford, ME20

Approximate Area = 1002 sq ft / 93.1 sq m
For identification only - Not to scale



Floor plan produced in accordance with RICS Property Measurement 2nd Edition, Incorporating International Property Measurement Standards (IPMS2 Residential). © nrichcom 2025. Produced for Simon Miller & Company. REF: 1253560



Malling Office
777 London Road, Larkfield, Aylesford,
Kent, ME20 6DE

Contact
01732 875706
larkfieldsales@simonmiller.co.uk
<https://simonmiller.co.uk/>

Agents Note: Whilst every care has been taken to prepare these particulars, they are for guidance purposes only. All measurements are approximate and for general guidance purposes only and whilst every care has been taken to ensure accuracy, they should not be relied upon and potential buyers/tenants are advised to recheck the measurements.