



The Groves , Snodland ME6 5ET

- Prime Location
- Underfloor Heating
- Stunning Kitchen/Diner
- Master Bedroom With En Suite
- Excellent Transport Links
- Modern & Stylish
- Brand-New Boiler
- Stunning Views
- Private Parking
- Great Local Amenities

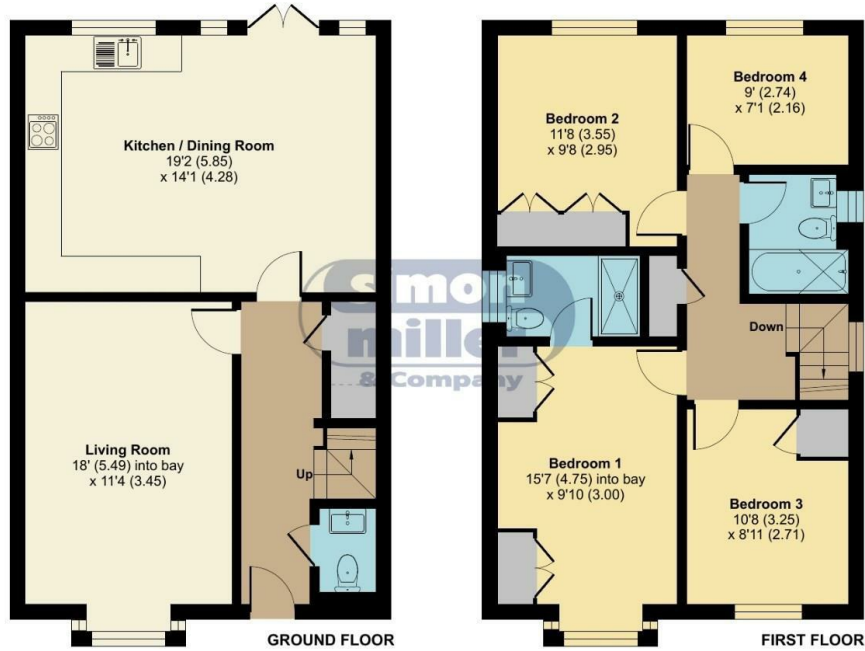
£525,000 Freehold

Local Authority
Council Tax Band E
EPC Rating B



Birlinging Road, Snodland, ME6

Approximate Area = 1206 sq ft / 112 sq m
For identification only - Not to scale



Floor plan produced in accordance with RICS Property Measurement 2nd Edition, Incorporating International Property Measurement Standards (IPMS2 Residential). © n3cheom 2025. Produced for Simon Miller & Company. REF: 1253170

Malling Office
777 London Road, Larkfield, Aylesford,
Kent, ME20 6DE

Contact
01732 875706
larkfieldsales@simonmiller.co.uk
<https://simonmiller.co.uk/>

Agents Note: Whilst every care has been taken to prepare these particulars, they are for guidance purposes only. All measurements are approximate and for general guidance purposes only and whilst every care has been taken to ensure accuracy, they should not be relied upon and potential buyers/tenants are advised to recheck the measurements.

