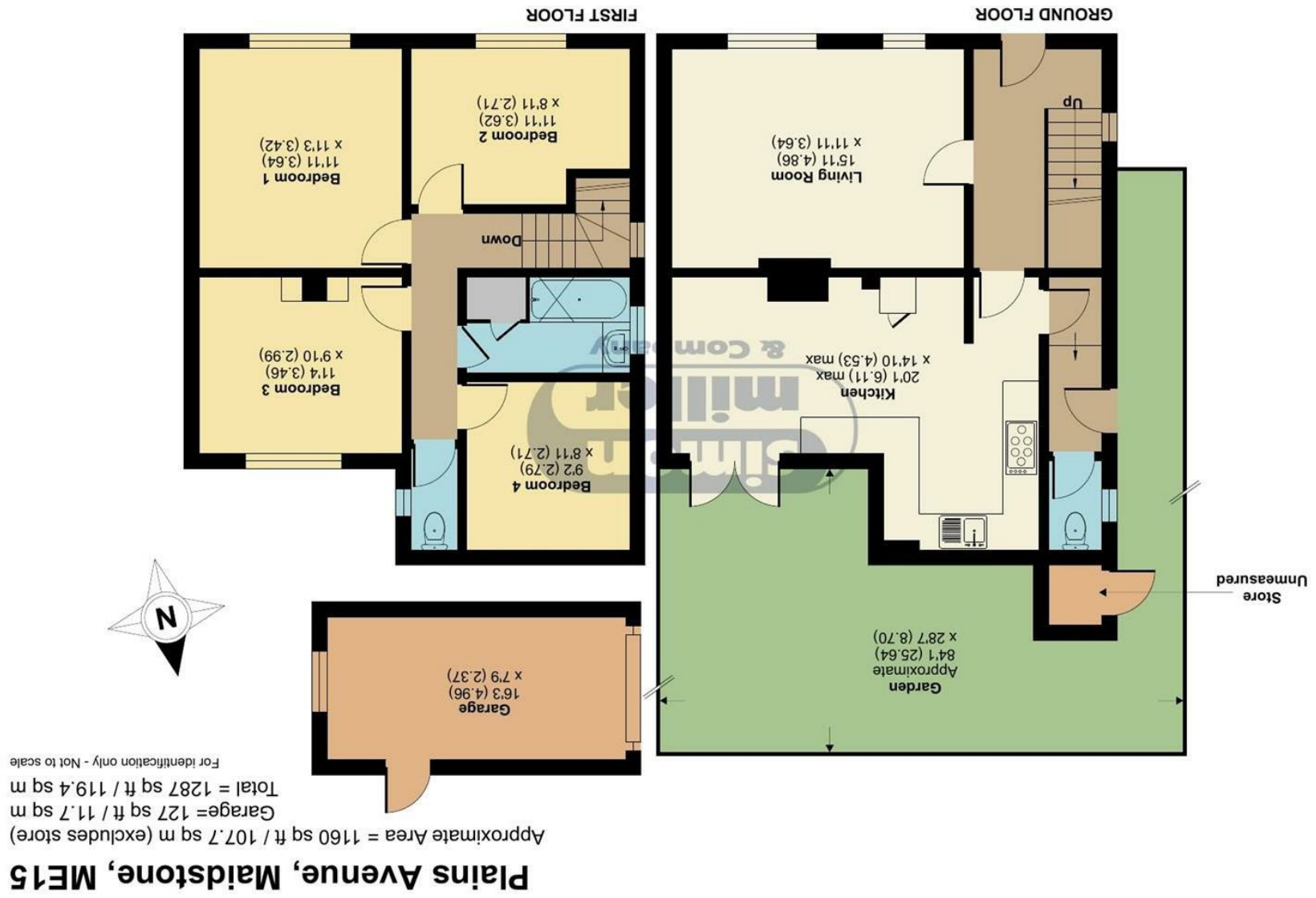


Floor plan produced in accordance with RICS Property Measurement 2nd Edition, incorporating International Property Measurement Standards (IPMS2 Residential). © nchecom 2025. Produced for Simon Miller & Company. REF: 1237384



139 Plains Avenue, Maidstone, ME15 7AX

Asking Price £400,000
 EPC RATING: D



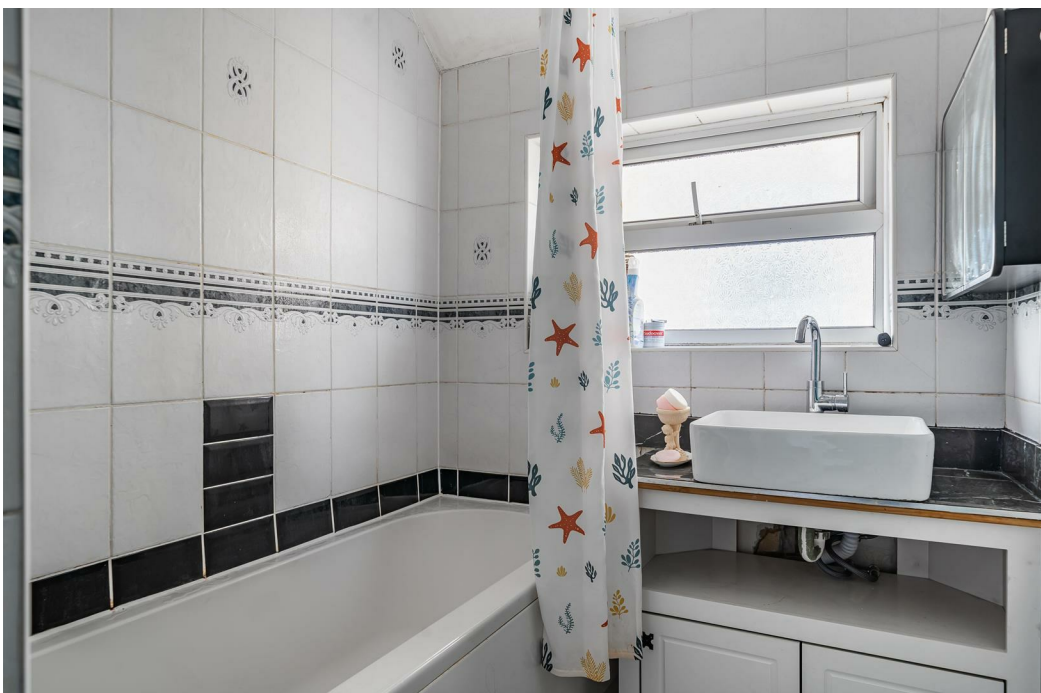


Offered chain free, this extended four bedroom semi detached family home is located in this popular road, within easy reach of Maidstone town centre. With lounge, kitchen/dining room and downstairs cloakroom, upstairs, the four bedrooms are served by a bathroom with a separate cloakroom. Outside, there is off street parking to the front and to the rear, the 84' garden offers a large block paved patio with lawned area beyond.

Located within walking distance of a well regarded Primary School, the property is close to Mote Park, with over 400 acres of woodlands and lakes and only a short distance to the County Town of Maidstone, with its wide range of shopping, leisure and transport facilities.

MATERIAL INFORMATION

Freehold
Council Tax Band D
EPC Report D



- Offered Chain Free • Four Bedrooms • Lounge • Kitchen/Dining Room • Downstairs Cloakroom • Off Street Parking • 84' Rear Gardens • Close to Mote Park and Maidstone Town Centre

Agents Note: All dimensions are approximate and quoted for guidance only. Reference to appliances, fixtures, fittings and services does not imply that they are necessarily in good condition, fit the purpose or are in working order. Interested parties are advised to obtain verification from their Solicitors as to the Freehold/Leasehold status of the property and confirmation regarding the condition of any fixtures and fittings included in the sale.

11, COLMAN HOUSE, MAIDSTONE, KENT, ME14 1DJ | 01622 691255 | MAIDSTONESALES@SIMONMILLER.CO.UK