



Heron Road

Larkfield, Aylesford ME20 6JW

- GUIDE PRICE: £400,000-£425,000
- Extended Three Bedroom Semi-Detached Family Home
- Corner Plot
- Downstairs W/C
- All Bedrooms With Built In Storage
- South Facing Rear Garden
- Open Plan Kitchen/Diner
- Garage En Bloc With Driveway

Guide Price £400,000 Freehold

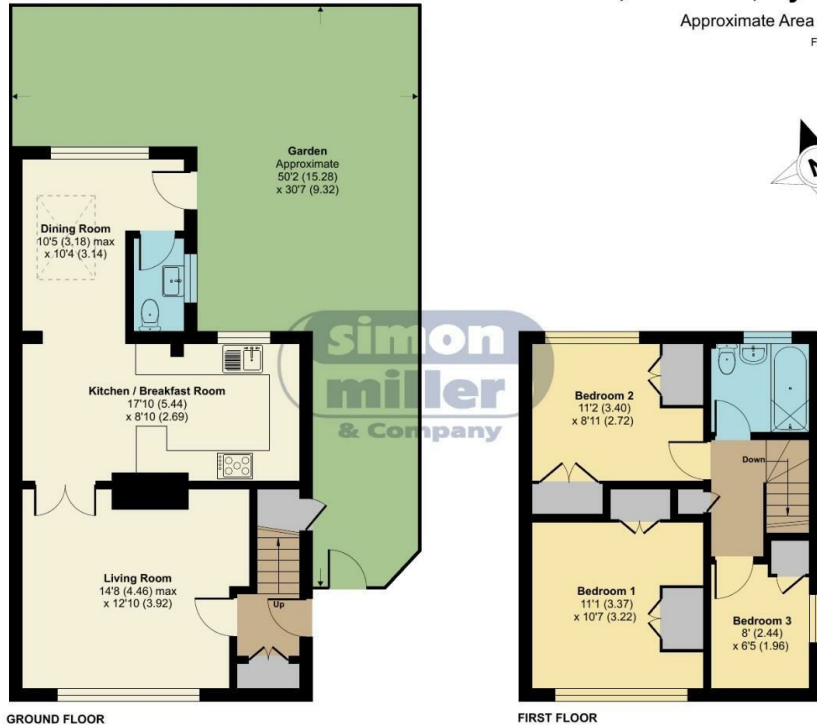


Local Authority
Council Tax Band C
EPC Rating C

Heron Road, Larkfield, Aylesford, ME20

Approximate Area = 917 sq ft / 85.2 sq m

For identification only - Not to scale



Floor plan produced in accordance with RICS Property Measurement 2nd Edition, Incorporating International Property Measurement Standards (IPMS2 Residential). © nrichem 2025. Produced for Simon Miller & Company. REF: 1264228



Mailing Office

777 London Road, Larkfield, Aylesford,
Kent, ME20 6DE

Contact

01732 875706
larkfieldsales@simonmiller.co.uk
<https://simonmiller.co.uk/>

Agents Note: Whilst every care has been taken to prepare these particulars, they are for guidance purposes only. All measurements are approximate and for general guidance purposes only and whilst every care has been taken to ensure accuracy, they should not be relied upon and potential buyers/tenants are advised to recheck the measurements.