



Swallow Road

Larkfield, Aylesford ME20 6PY

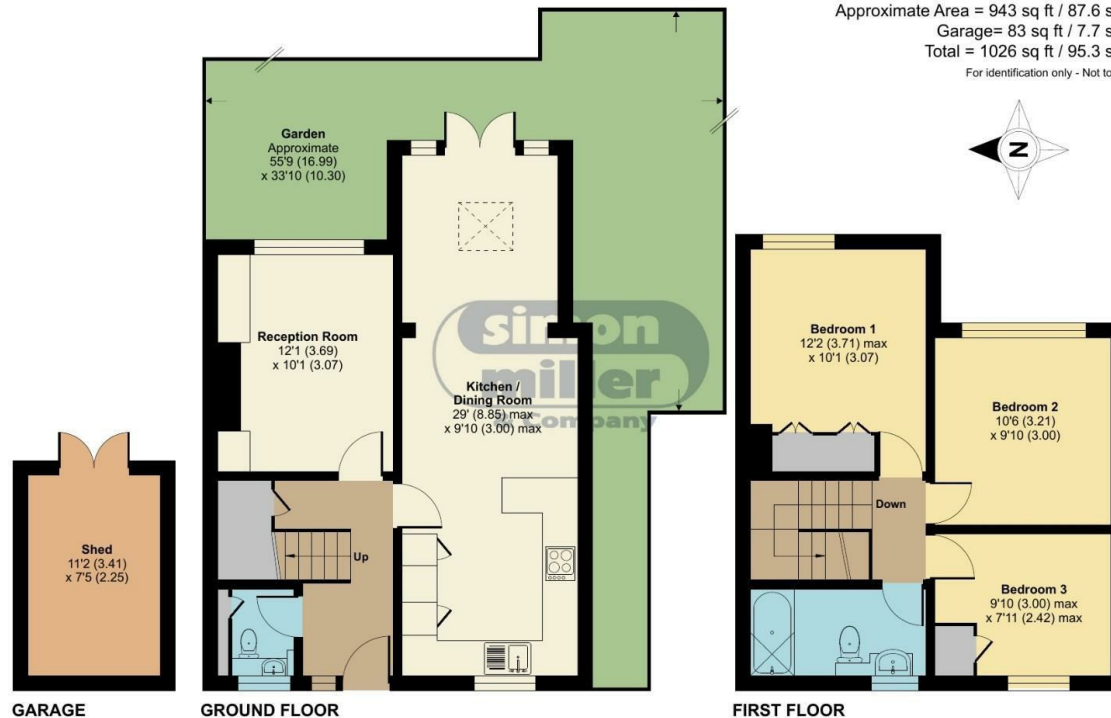
- Extended Three Bedroom Semi Detached Family Home
- Modern Family Bathroom
 - Cosy Lounge
 - Downstairs W/C
- Fantastic Open Plan Kitchen / Diner
- Within Walking Distance Of Schools & Amenities
 - Private Driveway
- Decorated Immaculately Throughout

£425,000 Freehold

Local Authority
Council Tax Band D
EPC Rating C

Swallow Road, Larkfield, Aylesford, ME20

Approximate Area = 943 sq ft / 87.6 sq m
Garage = 83 sq ft / 7.7 sq m
Total = 1026 sq ft / 95.3 sq m
For identification only - Not to scale



Floor plan produced in accordance with RICS Property Measurement 2nd Edition,
Incorporating International Property Measurement Standards (IPMS2 Residential). © nichcom 2025.
Produced for Simon Miller & Company. REF: 1269744



Malling Office

777 London Road, Larkfield, Aylesford,
Kent, ME20 6DE

Contact

01732 875706
larkfieldsales@simonmiller.co.uk
<https://simonmiller.co.uk/>

Agents Note: Whilst every care has been taken to prepare these particulars, they are for guidance purposes only. All measurements are approximate and for general guidance purposes only and whilst every care has been taken to ensure accuracy, they should not be relied upon and potential buyers/tenants are advised to recheck the measurements.