



Woodlands Road

Ditton, Aylesford ME20 6EZ

- Immaculately Presented Three Bedroom Semi Detached Family Home
 - Converted Garage
- Separate Utility Room & W/C
 - Popular Ditton Location
- Large Driveway
 - Home Office
- Bright & Airy Lounge
 - Within Close Proximity Of Commuter Links

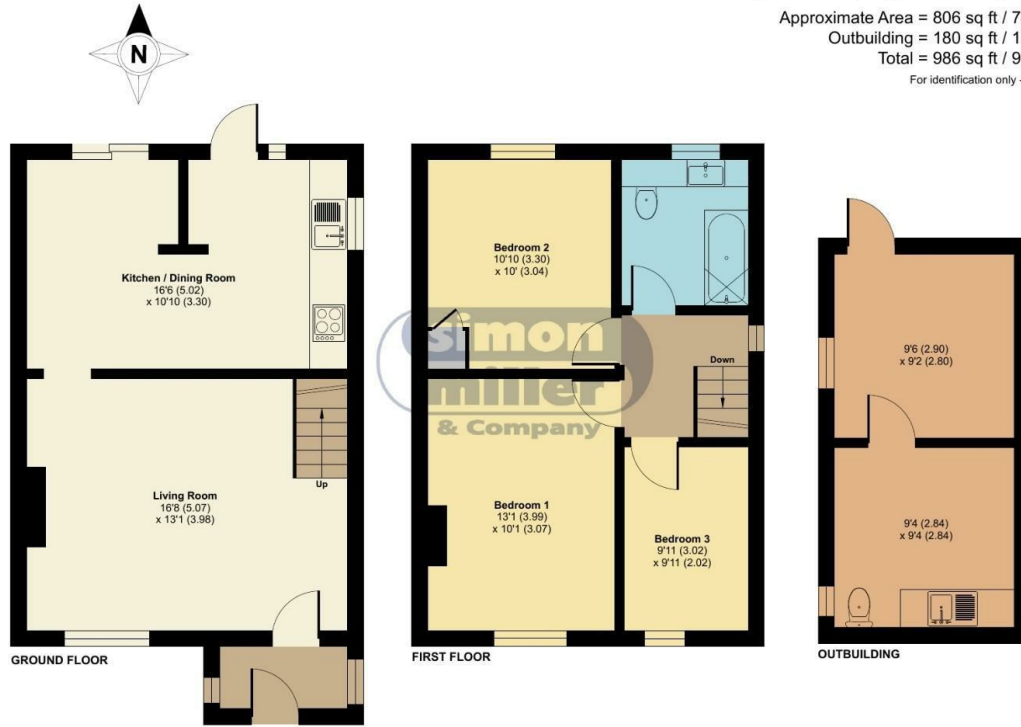
£395,000 Freehold



Local Authority
Council Tax Band D
EPC Rating D

Woodlands Road, Ditton, Aylesford, ME20

Approximate Area = 806 sq ft / 74.8 sq m
Outbuilding = 180 sq ft / 16.7 sq m
Total = 986 sq ft / 91.5 sq m
For identification only - Not to scale



Floor plan produced in accordance with RICS Property Measurement 2nd Edition, incorporating International Property Measurement Standards (IPMS2 Residential). © n3cheom 2025. Produced for Simon Miller & Company. REF: 1257030



Malling Office
777 London Road, Larkfield, Aylesford,
Kent, ME20 6DE

Contact
01732 875706
larkfieldsales@simonmiller.co.uk
<https://simonmiller.co.uk/>

Agents Note: Whilst every care has been taken to prepare these particulars, they are for guidance purposes only. All measurements are approximate and for general guidance purposes only and whilst every care has been taken to ensure accuracy, they should not be relied upon and potential buyers/tenants are advised to recheck the measurements.