



Tonbridge Road

Wateringbury, Maidstone ME18 5NX

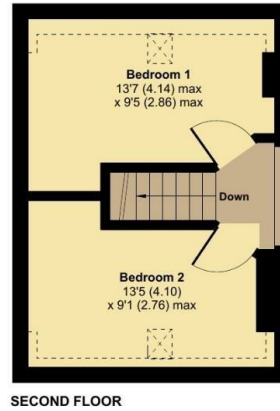
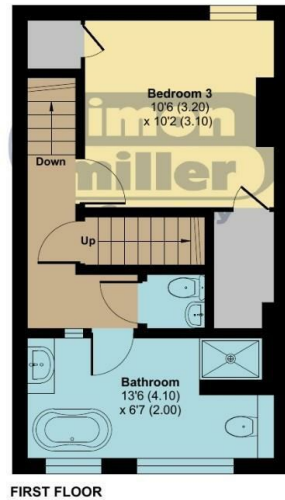
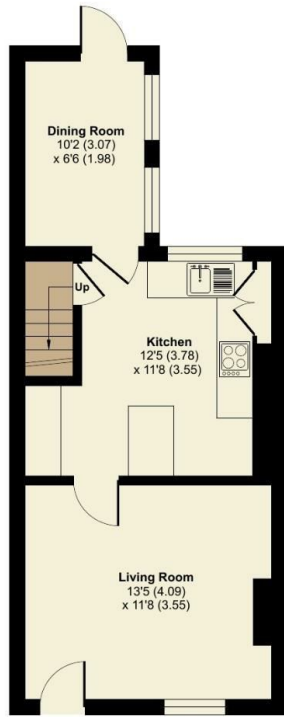
- A Wonderful THREE Bedroom End of Terrace Home
- Popular Village of Wateringbury
- Close to Amenities and Country Walks
- Upgraded and Improved Interior
- Lovely Rear Garden
- CALL TO VIEW

Offers In The Region Of £375,000 Freehold

Local Authority
Council Tax Band D
EPC Rating D

Tonbridge Road, Watringbury, Maidstone, ME18

Approximate Area = 943 sq ft / 87.6 sq m
Limited Use Area(s) = 20 sq ft / 1.8 sq m
Total = 963 sq ft / 89.5 sq m
For identification only - Not to scale



Denotes restricted
head height



Floor plan produced in accordance with RICS Property Measurement 2nd Edition, Incorporating International Property Measurement Standards (IPMS2 Residential). © n3chem 2025. Produced for Simon Miller & Company. REF: 1257198

Mailing Office

777 London Road, Larkfield, Aylesford,
Kent, ME20 6DE

Contact

01732 875706
larkfieldsales@simonmiller.co.uk
<https://simonmiller.co.uk/>

Agents Note: Whilst every care has been taken to prepare these particulars, they are for guidance purposes only. All measurements are approximate and for general guidance purposes only and whilst every care has been taken to ensure accuracy, they should not be relied upon and potential buyers/tenants are advised to recheck the measurements.