



Orchard Avenue

, Aylesford ME20 7LU

- Extended Four Bedroom Semi-Detached Family Home
- Three Bathrooms and Downstairs W/C
- Three Reception Rooms
- Private Driveway
- Boasting in Excess of 1750SqFt Of Accommodation
- Flexible Family Accomodation
- West Facing Rear Garden
- Popular Greenacres Development

£525,000 Freehold

Local Authority
Council Tax Band E
EPC Rating D

Orchard Avenue, Aylesford, ME20

Approximate Area = 1611 sq ft / 149.6 sq m

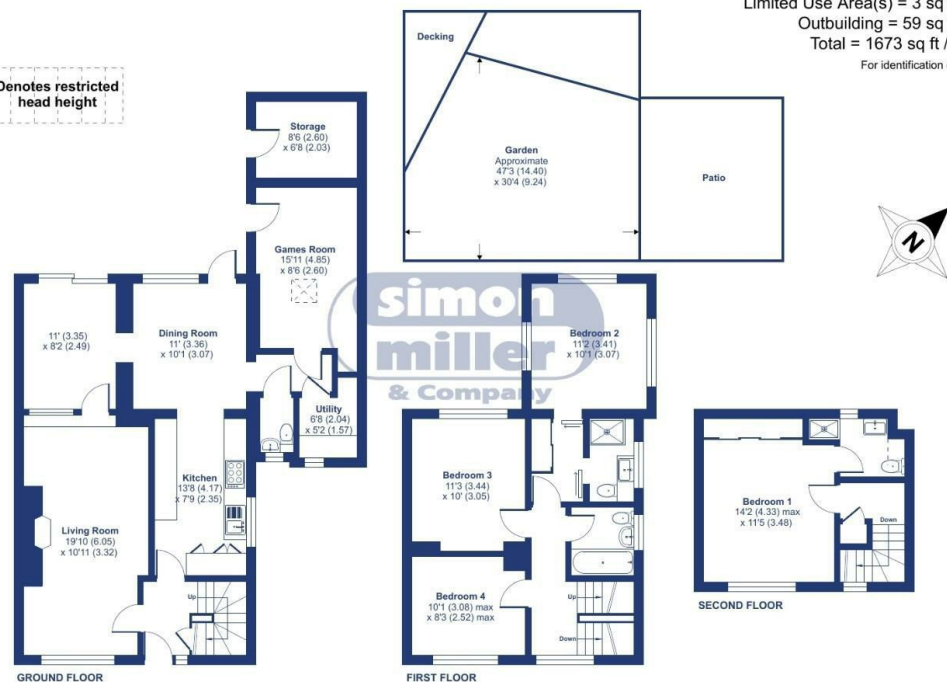
Limited Use Area(s) = 3 sq ft / 0.2 sq m

Outbuilding = 59 sq ft / 5.4 sq m

Total = 1673 sq ft / 155.4 sq m

For identification only - Not to scale

Denotes restricted
head height



Floor plan produced in accordance with RICS Property Measurement 2nd Edition, Incorporating International Property Measurement Standards (IPMS2 Residential). © nichcom 2025. Produced for Simon Miller & Company. REF: 1260703

Mailing Office

777 London Road, Larkfield, Aylesford,
Kent, ME20 6DE

Contact

01732 875706
larkfieldsales@simonmiller.co.uk
<https://simonmiller.co.uk/>

Agents Note: Whilst every care has been taken to prepare these particulars, they are for guidance purposes only. All measurements are approximate and for general guidance purposes only and whilst every care has been taken to ensure accuracy, they should not be relied upon and potential buyers/tenants are advised to recheck the measurements.

