



## Orchard Avenue

, Aylesford ME20 7LU

- Extended Four Bedroom Semi-Detached Family Home
- Three Bathrooms and Downstairs W/C
- Three Reception Rooms
- Private Driveway
- Boasting in Excess of 1750SqFt Of Accommodation
- Flexible Family Accomodation
- West Facing Rear Garden
- Popular Greenacres Development

**£525,000 Freehold**



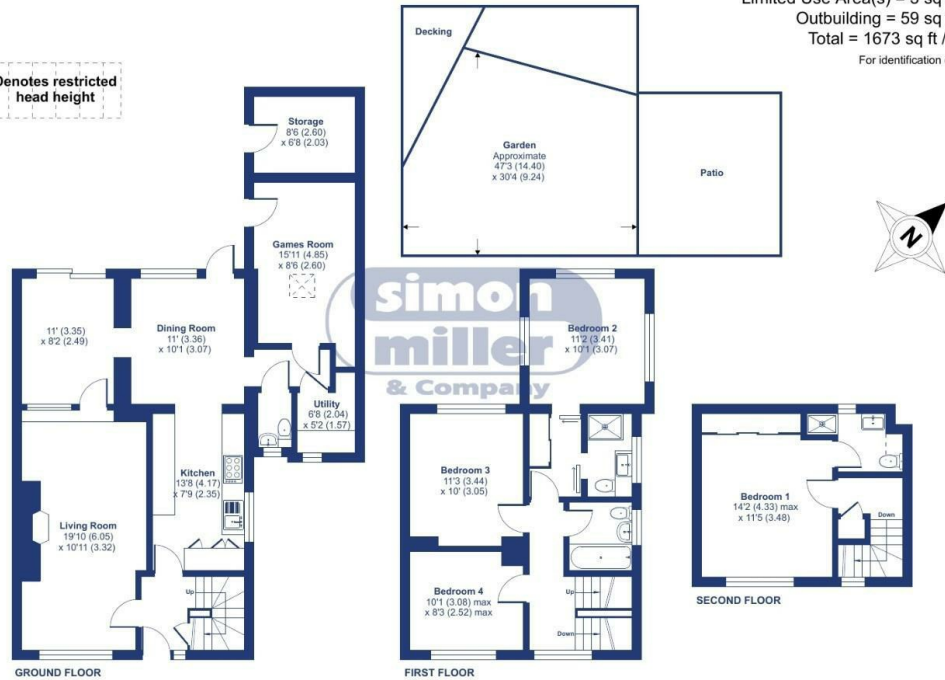
Local Authority  
Council Tax Band E  
EPC Rating D

## Orchard Avenue, Aylesford, ME20

Approximate Area = 1611 sq ft / 149.6 sq m  
Limited Use Area(s) = 3 sq ft / 0.2 sq m  
Outbuilding = 59 sq ft / 5.4 sq m  
Total = 1673 sq ft / 155.4 sq m

For identification only - Not to scale

Denotes restricted  
head height



Floor plan produced in accordance with RICS Property Measurement 2nd Edition, Incorporating International Property Measurement Standards (IPMS2 Residential). © nrichem 2025. Produced for Simon Miller & Company. REF: 1260703



**Malling Office**  
777 London Road, Larkfield, Aylesford,  
Kent, ME20 6DE

**Contact**  
01732 875706  
larkfieldsales@simonmiller.co.uk  
<https://simonmiller.co.uk/>

Agents Note: Whilst every care has been taken to prepare these particulars, they are for guidance purposes only. All measurements are approximate and for general guidance purposes only and whilst every care has been taken to ensure accuracy, they should not be relied upon and potential buyers/tenants are advised to recheck the measurements.