



## May Street , Snodland ME6 5AZ

- A THREE Bedroom Terrace Home
  - Additional Reception Room
- Does Require Some Upgrading
- Open Plan Living Space
- Long Garden with an Outbuilding
- On Road Parking

**Offers In The Region Of £240,000 Freehold**



Local Authority  
Council Tax Band C  
EPC Rating D

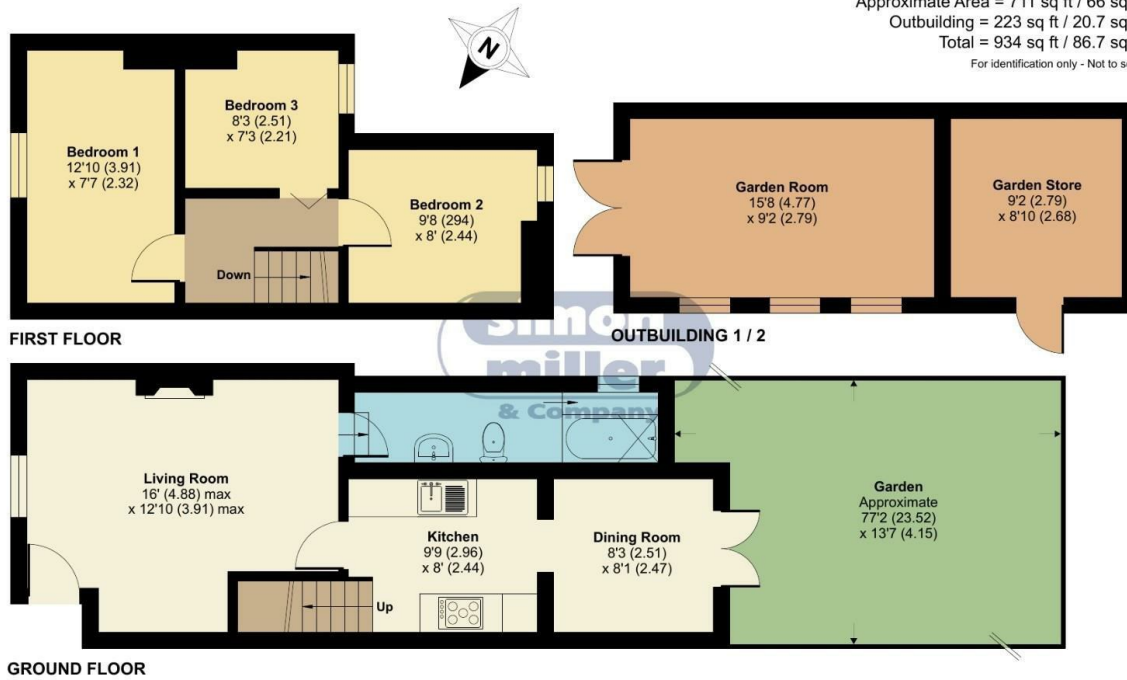
## May Street, ME6

Approximate Area = 711 sq ft / 66 sq m

Outbuilding = 223 sq ft / 20.7 sq m

Total = 934 sq ft / 86.7 sq m

For identification only - Not to scale



Floor plan produced in accordance with RICS Property Measurement 2nd Edition, Incorporating International Property Measurement Standards (IPMS2 Residential). © n3chem 2025. Produced for Simon Miller & Company. REF: 1257249



**Malling Office**  
777 London Road, Larkfield, Aylesford,  
Kent, ME20 6DE

**Contact**  
01732 875706  
larkfieldsales@simonmiller.co.uk  
<https://simonmiller.co.uk/>

Agents Note: Whilst every care has been taken to prepare these particulars, they are for guidance purposes only. All measurements are approximate and for general guidance purposes only and whilst every care has been taken to ensure accuracy, they should not be relied upon and potential buyers/tenants are advised to recheck the measurements.