



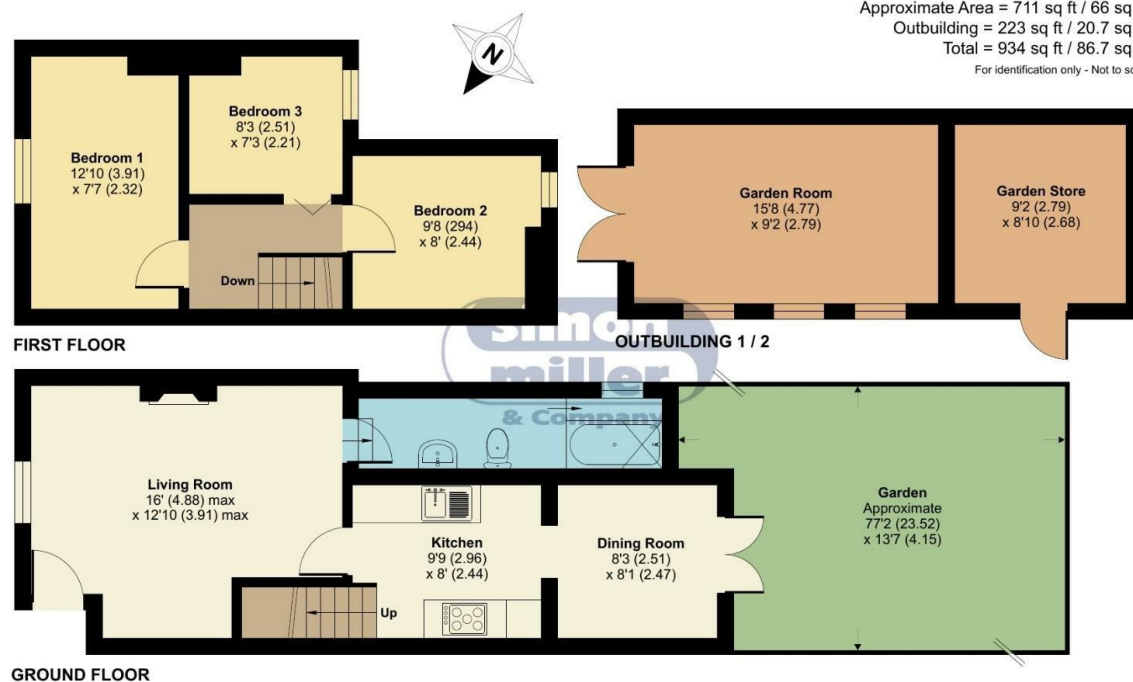
May Street , Snodland ME6 5AZ

- A THREE Bedroom Terrace Home
 - Additional Reception Room
- Does Require Some Upgrading
- Open Plan Living Space
- Long Garden with an Outbuilding
- On Road Parking

Offers In The Region Of £240,000 Freehold



Local Authority
Council Tax Band C
EPC Rating D



Floor plan produced in accordance with RICS Property Measurement 2nd Edition, Incorporating International Property Measurement Standards (IPMS2 Residential). © nchecom 2025. Produced for Simon Miller & Company. REF: 1257249

Malling Office
777 London Road, Larkfield, Aylesford,
Kent, ME20 6DE

Contact
01732 875706
larkfieldsales@simonmiller.co.uk
<https://simonmiller.co.uk/>

Agents Note: Whilst every care has been taken to prepare these particulars, they are for guidance purposes only. All measurements are approximate and for general guidance purposes only and whilst every care has been taken to ensure accuracy, they should not be relied upon and potential buyers/tenants are advised to recheck the measurements.

