



## Tonbridge Road

Watlingbury, Maidstone ME18 5NX

- A Wonderful THREE Bedroom End of Terrace Home
- Popular Village of Watlingbury
- Close to Amenities and Country Walks
- Upgraded and Improved Interior
- Lovely Rear Garden
- CALL TO VIEW

**Offers In The Region Of £375,000 Freehold**

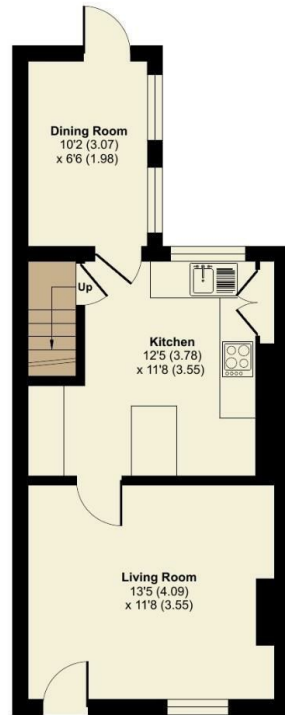


Local Authority  
Council Tax Band D  
EPC Rating D

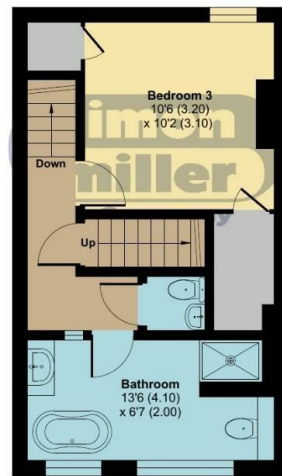
## Tonbridge Road, Watlingbury, Maidstone, ME18

Approximate Area = 943 sq ft / 87.6 sq m  
Limited Use Area(s) = 20 sq ft / 1.8 sq m  
Total = 963 sq ft / 89.5 sq m

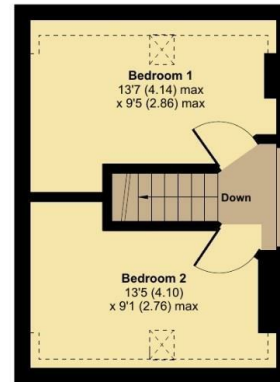
For identification only - Not to scale



GROUND FLOOR



FIRST FLOOR



SECOND FLOOR

Floor plan produced in accordance with RICS Property Measurement 2nd Edition, incorporating International Property Measurement Standards (IPMS2 Residential). © nichcom 2025. Produced for Simon Miller & Company. REF: 1257198

### Malling Office

777 London Road, Larkfield, Aylesford,  
Kent, ME20 6DE

### Contact

01732 875706  
larkfieldsales@simonmiller.co.uk  
<https://simonmiller.co.uk/>

Agents Note: Whilst every care has been taken to prepare these particulars, they are for guidance purposes only. All measurements are approximate and for general guidance purposes only and whilst every care has been taken to ensure accuracy, they should not be relied upon and potential buyers/tenants are advised to recheck the measurements.

