



Oak Drive

Larkfield, Aylesford ME20 6NL

- Garage & Driveway
- New Boiler Within Last Few Years
- New Garage Roof
- Conservatory To Rear
- Two Double Bedrooms
- Popular 'Trees Development'

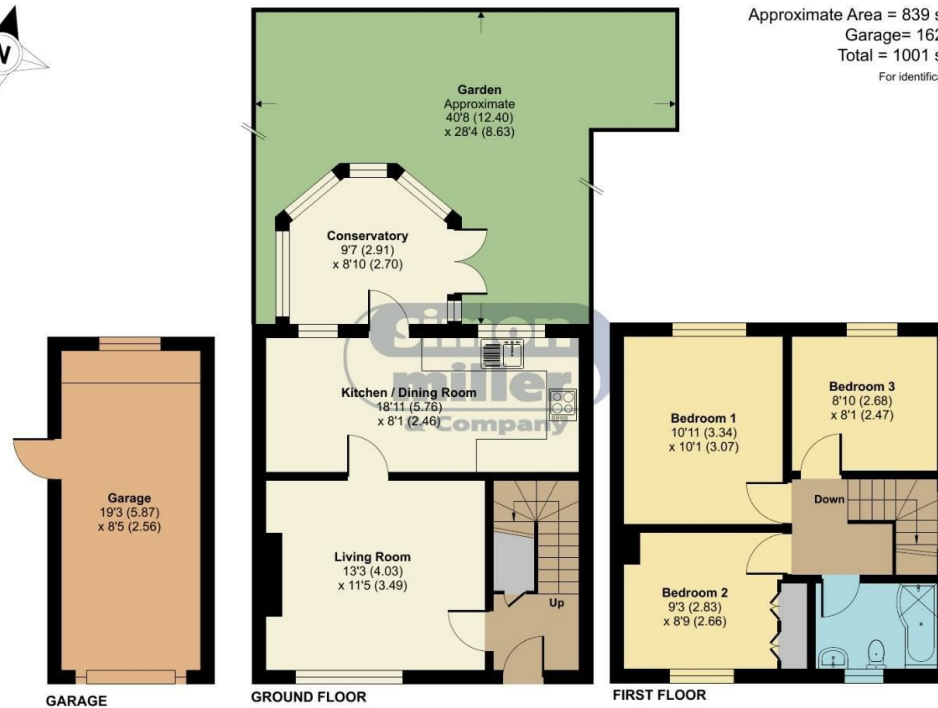
£375,000 Freehold



Local Authority
Council Tax Band D
EPC Rating C

Oak Drive, Larkfield, Aylesford, ME20

Approximate Area = 839 sq ft / 77.9 sq m
Garage = 162 sq ft / 15 sq m
Total = 1001 sq ft / 92.9 sq m
For identification only - Not to scale



Floor plan produced in accordance with RICS Property Measurement 2nd Edition,
Incorporating International Property Measurement Standards (IPMS2 Residential). © nchecom 2025.
Produced for Simon Miller & Company. REF: 1262703

Malling Office

777 London Road, Larkfield, Aylesford,
Kent, ME20 6DE

Contact

01732 875706
larkfieldsales@simonmiller.co.uk
<https://simonmiller.co.uk/>

Agents Note: Whilst every care has been taken to prepare these particulars, they are for guidance purposes only. All measurements are approximate and for general guidance purposes only and whilst every care has been taken to ensure accuracy, they should not be relied upon and potential buyers/tenants are advised to recheck the measurements.

