

PERIOD HOMES

By Simon Miller



Rochester Road

, Aylesford ME20 7EA

- Grade II Listed Oast House
 - Set Within 0.5 Acres
- Private & Secluded Location
 - Commuter-Friendly
- Four Spacious Bedrooms
 - Wealth of Original Features
- Bordered by a Running Stream
 - A Unique Opportunity

Offers In Excess Of £850,000 Freehold

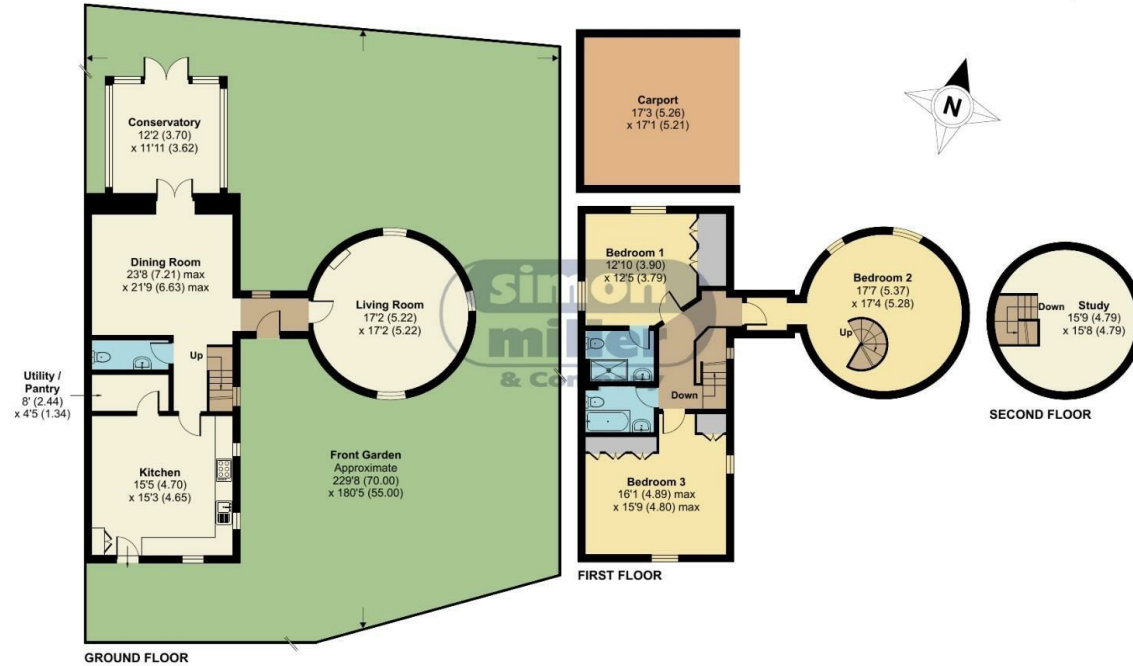


Local Authority
Council Tax Band G
EPC Rating

Rochester Road, Aylesford, ME20

Approximate Area = 2074 sq ft / 192.7 sq m (excludes carport)

For identification only - Not to scale



Floor plan produced in accordance with RICS Property Measurement 2nd Edition, Incorporating International Property Measurement Standards (IPMS2 Residential). © nichecom 2025. Produced for Simon Miller & Company. REF: 1248426

Period Homes by Simon Miller Office
Weald, 5 High Street, Headcorn, Ashford,
Kent, TN27 9NH

Contact

01622 850888
admin@periodhomesbysimonmiller.co.uk
<https://simonmiller.co.uk/period-homes/>

Agents Note: Whilst every care has been taken to prepare these particulars, they are for guidance purposes only. All measurements are approximate and for general guidance purposes only and whilst every care has been taken to ensure accuracy, they should not be relied upon and potential buyers/tenants are advised to recheck the measurements.

