

**PERIOD HOMES**

By Simon Miller



## Bow Road

Watlingbury, Maidstone ME18 5DD

- A Substantial FOUR BEDROOM Period Home with Additional ANNEXE
- Wonderful Period Features and appointed over FOUR Floors
- Annex with its Own Private Walled Garden and Parking
- Over 2300 sq ft of Accommodation
- Large Rear Garden to the Main House and Parking to Front
- Popular Watlingbury Village Location

**Offers In The Region Of £750,000 Freehold**



Local Authority  
Council Tax Band F  
EPC Rating E

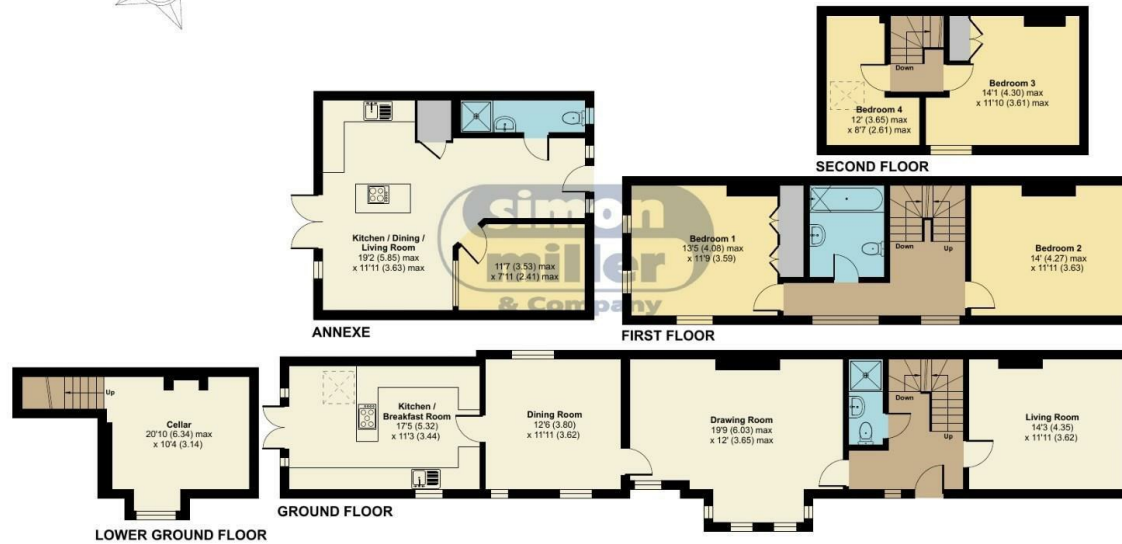
## Bow Road, Watlington, Maidstone, ME18

Approximate Area = 1896 sq ft / 176.1 sq m

Annexe = 460 sq ft / 42.7 sq m

Total = 2356 sq ft / 218.8sq m

For identification only - Not to scale



Floor plan produced in accordance with RICS Property Measurement 2nd Edition, Incorporating International Property Measurement Standards (IPMS2 Residential). © nchecom 2025. Produced for Simon Miller & Company. REF: 1263787

**Period Homes by Simon Miller Office**  
Weald, 5 High Street, Headcorn, Ashford,  
Kent, TN27 9NH

### Contact

01622 850888  
[admin@periodhomesbysimonmiller.co.uk](mailto:admin@periodhomesbysimonmiller.co.uk)  
<https://simonmiller.co.uk/period-homes/>

Agents Note: Whilst every care has been taken to prepare these particulars, they are for guidance purposes only. All measurements are approximate and for general guidance purposes only and whilst every care has been taken to ensure accuracy, they should not be relied upon and potential buyers/tenants are advised to recheck the measurements.

