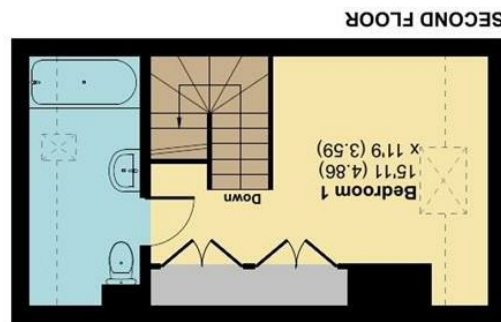
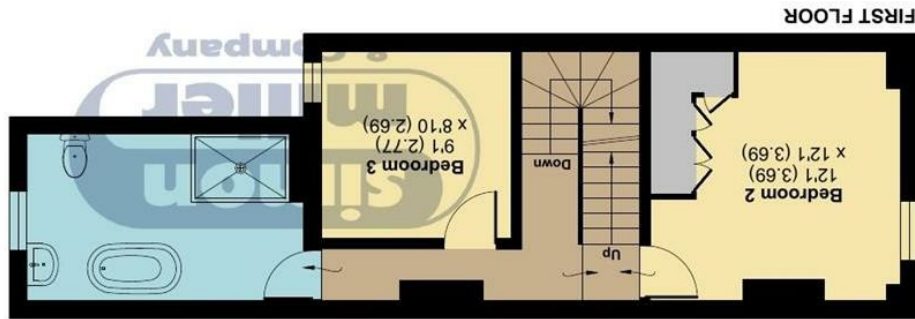
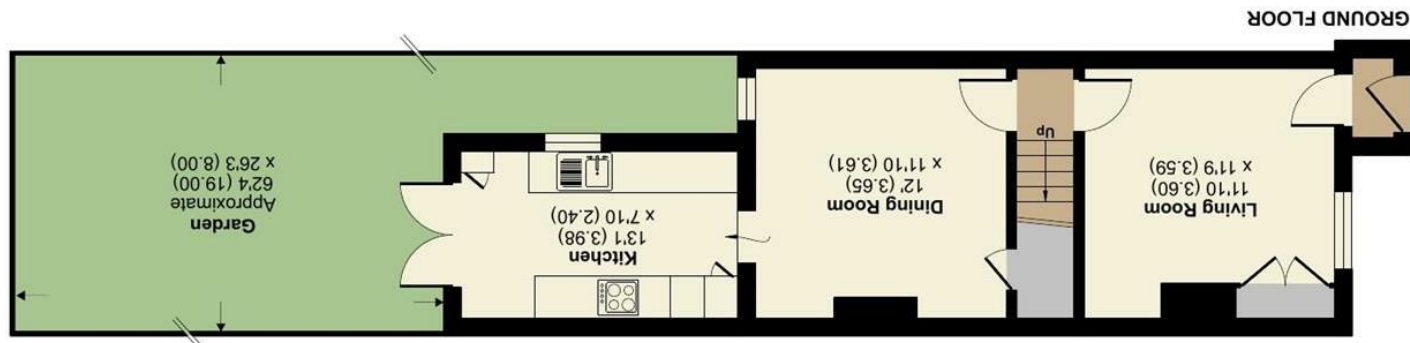


Floor plan produced in accordance with RICS Property Measurement 2nd Edition, incorporating International Property Measurement Standards (IPMS2 Residential). © nchecom 2025. Produced for Simon Miller & Company. REF: 1258338



Denotes restricted head height

Approximate Area = 1088 sq ft / 101 sq m  
 Limited Use Area(s) = 40 sq ft / 3.7 sq m  
 Garage = 107 sq ft / 10 sq m  
 Total = 1235 sq ft / 114.7 sq m  
 For identification only - Not to scale



The Green, Bearsted, Maidstone, ME14

6 Invicta Villas The Green, Bearsted, ME14 4DT

Offers In Excess Of £475,000  
 EPC RATING: E





Located on the sought after and very popular Bearsted Green, this stunning three-bedroom end-of-terrace Victorian home offers a delightful blend of period character and modern comforts. Spanning an impressive 1,235 square feet, the property boasts two spacious reception rooms, perfect for both entertaining guests and enjoying quiet family evenings.

Built in approximately 1890, this home retains its historical charm while incorporating contemporary features such as underfloor heating in the kitchen, ensuring warmth and comfort throughout the colder months. The property includes two well-appointed bathrooms, providing convenience for families or guests alike.

The exterior of the home is equally appealing, featuring a garage and parking space for one vehicle, a valuable asset in this desirable location. Bearsted Green is renowned for being one of the most popular village Greens in Kent. It prides itself on its history and local events that are put on here regularly. These include annual fayres, music shows, farmers markets, cricket matches and many others amazing events.

There are local pubs and restaurants close at hand. Along with excellent motorway links, mainline BR station with fast and regular links to London Victoria and Maidstone Town Centre, which again has an array of shops, bars and restaurants and prides itself on being Kent's County Town.

This Victorian gem is not just a house; it is a home filled with character and warmth, waiting for the right family to create lasting memories within its walls. If you are looking for a property that combines historical elegance with modern living, this home in Bearsted is not to be missed.

## MATERIAL INFORMATION

**Freehold**  
**Council Tax Band D**  
**EPC Report E**



• Stunning Three Bedroom End Of Terrace Victorian Home • Perfect Blend Of Period Character & Modern Charm • Over Looking The Bearsted Green • Bathroom & En-Suite To Master Bedroom • Landscaped Gardens To Front & Rear • Garage & Off Street Parking • Walking Distance To Bearsted Train Station • Underfloor Heating • Easy Access To M2 & M20 • Close to Popular Schools

Agents Note: All dimensions are approximate and quoted for guidance only. Reference to appliances, fixtures, fittings and services does not imply that they are necessarily in good condition, fit the purpose or are in working order. Interested parties are advised to obtain verification from their Solicitors as to the Freehold/Leasehold status of the property and confirmation regarding the condition of any fixtures and fittings included in the sale.

11, COLMAN HOUSE, MAIDSTONE, KENT, ME14 1DJ | 01622 691255 | MAIDSTONESALES@SIMONMILLER.CO.UK