

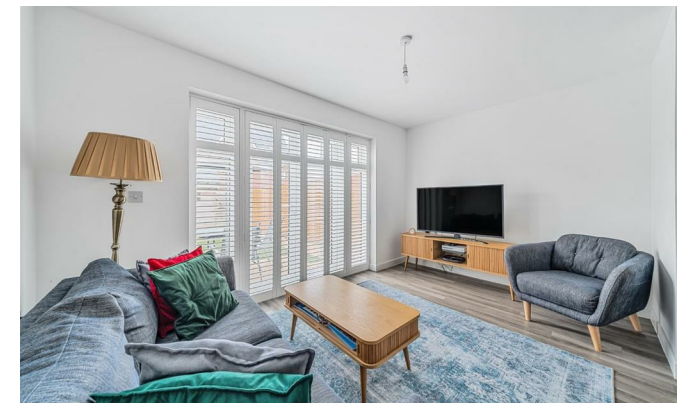


## Boulton View

, Wouldham ME1 3GN

- Two Double Bedroom End Of Terrace
  - Allocated Parking
- Quiet Cul De Sac Location
- South Facing Rear Garden
- Modern And Contemporary Throughout
- Ready To View NOW !

**£350,000 Freehold**

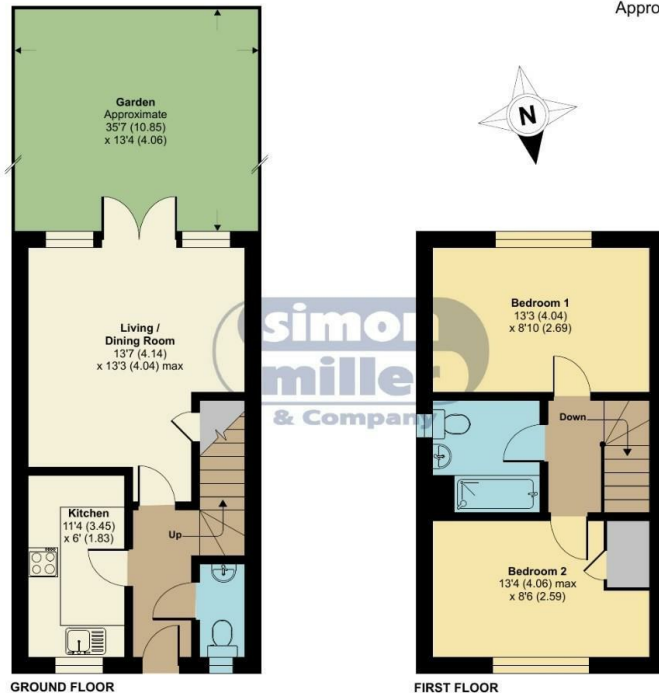


Local Authority  
Council Tax Band C  
EPC Rating B

## Boulton View, Wouldham, Rochester, ME1

Approximate Area = 688 sq ft / 63.9 sq m

For identification only - Not to scale



Floor plan produced in accordance with RICS Property Measurement Standards incorporating International Property Measurement Standards (IPMS2 Residential). © nrichcom 2024. Produced for Simon Miller & Company. REF: 1082451

### Malling Office

777 London Road, Larkfield, Aylesford,  
Kent, ME20 6DE

### Contact

01732 875706  
larkfieldsales@simonmiller.co.uk  
<https://simonmiller.co.uk/>

Agents Note: Whilst every care has been taken to prepare these particulars, they are for guidance purposes only. All measurements are approximate and for general guidance purposes only and whilst every care has been taken to ensure accuracy, they should not be relied upon and potential buyers/tenants are advised to recheck the measurements.

