



Eaton Place , Larkfield ME20 7GF

- Two Double Bedroom Move In Ready Apartment
 - Communal Garden
 - Fully Integrated Kitchen
 - Allocated Parking
- Recently Fitted Modern Family Bathroom
 - Master Bedroom With En-Suite
 - Open Plan Layout
 - Ready to View NOW!

£235,000 Leasehold



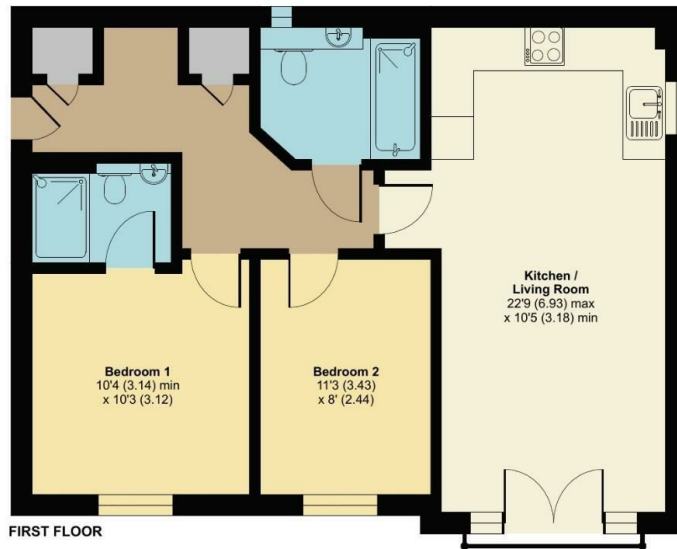
Local Authority
Council Tax Band C
EPC Rating C



Eaton Place, Larkfield, Aylesford, ME20

Approximate Area = 656 sq ft / 60.9 sq m

For identification only - Not to scale



Floor plan produced in accordance with RICS Property Measurement 2nd Edition, Incorporating International Property Measurement Standards (IPMS2 Residential). © nchecom 2025. Produced for Simon Miller & Company. REF: 1268754

Malling Office

777 London Road, Larkfield, Aylesford,
Kent, ME20 6DE

Contact

01732 875706
larkfieldsales@simonmiller.co.uk
<https://simonmiller.co.uk/>

Agents Note: Whilst every care has been taken to prepare these particulars, they are for guidance purposes only. All measurements are approximate and for general guidance purposes only and whilst every care has been taken to ensure accuracy, they should not be relied upon and potential buyers/tenants are advised to recheck the measurements.

