

PERIOD HOMES

By Simon Miller



Vicarage Road

Yalding, Maidstone ME18 6DS

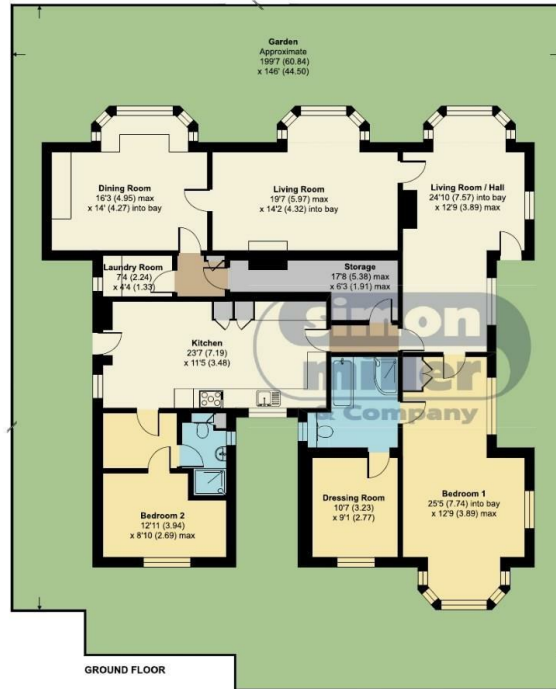
- GUIDE PRICE: £700,000-£750,000
- Situated in a delightful semi-rural setting on the edge of this picturesque Village
- Far reaching countryside views and backing onto farmland
- Cherry Tree House is a charming, detached home of great character
- A Grade 2 Listed two bedroom character property
- A detached garage with own driveway.

Guide Price £700,000 Freehold

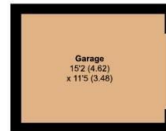
Local Authority
Council Tax Band G
EPC Rating D

Vicarage Road, Yalding, Maidstone, ME18

Approximate Area = 1834 sq ft / 170.3 sq m
Garage = 174 sq ft / 16.1 sq m
Total = 2008 sq ft / 186.5 sq m
For identification only - Not to scale



Denotes restricted
head height



Floor plan produced in accordance with RICS Property Measurement 2nd Edition,
Incorporating International Property Measurement Standards (IPMS2 Residential). © nichcom 2025.
Produced for Simon Miller & Company, REF: 1268189

Period Homes by Simon Miller Office
Weald, 5 High Street, Headcorn, Ashford,
Kent, TN27 9NH

Contact

01622 850888
admin@periodhomesbysimonmiller.co.uk
<https://simonmiller.co.uk/period-homes/>

Agents Note: Whilst every care has been taken to prepare these particulars, they are for guidance purposes only. All measurements are approximate and for general guidance purposes only and whilst every care has been taken to ensure accuracy, they should not be relied upon and potential buyers/tenants are advised to recheck the measurements.

