



Lunsford Lane

Larkfield, Aylesford ME20 6HX

- Three Bedroom Semi-Detached Bungalow
- Driveway & Tandem Garage
- Master Bedroom With En Suite
- Kitchen / Breakfast Room
- Chain Free!
- 62Ft Rear Garden
- Wet Room
- Flexible Accomodation

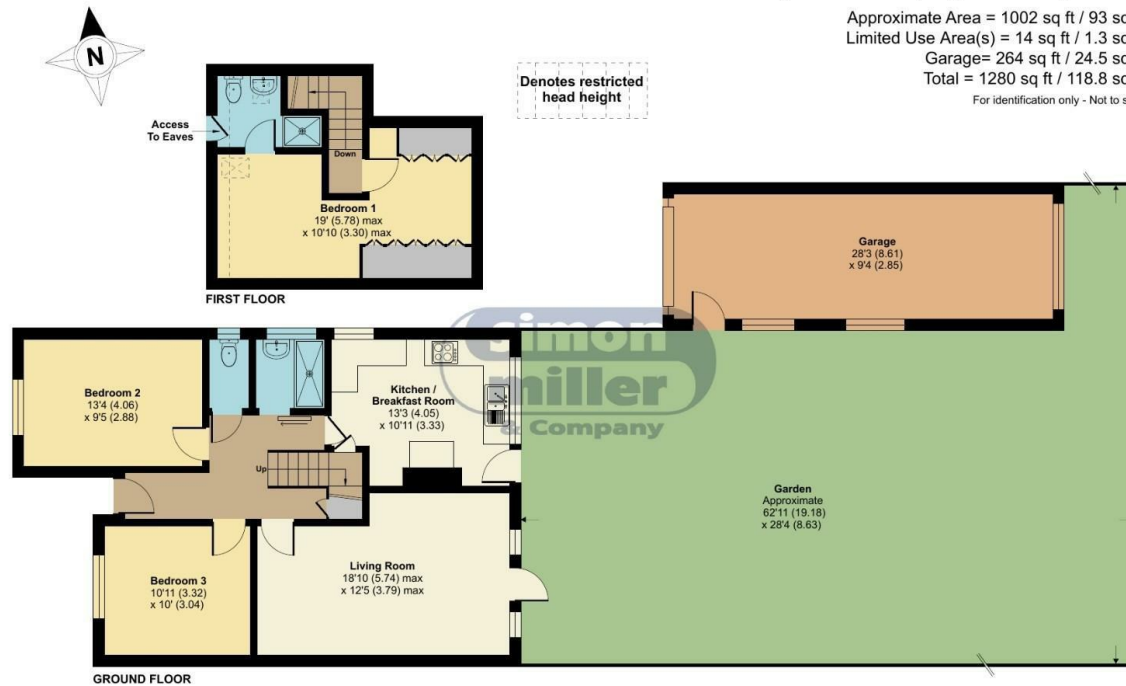
Offers In Excess Of £400,000 Freehold

Local Authority
Council Tax Band C
EPC Rating D

Lunsford Lane, Larkfield, Aylesford, ME20

Approximate Area = 1002 sq ft / 93 sq m
Limited Use Area(s) = 14 sq ft / 1.3 sq m
Garage = 264 sq ft / 24.5 sq m
Total = 1280 sq ft / 118.8 sq m

For identification only - Not to scale



Floor plan produced in accordance with RICS Property Measurement 2nd Edition, Incorporating International Property Measurement Standards (IPMS2 Residential). © nchecom 2025. Produced for Simon Miller & Company. REF: 1277096

Malling Office

777 London Road, Larkfield, Aylesford,
Kent, ME20 6DE

Contact

01732 875706
larkfieldsales@simonmiller.co.uk
<https://simonmiller.co.uk/>

Agents Note: Whilst every care has been taken to prepare these particulars, they are for guidance purposes only. All measurements are approximate and for general guidance purposes only and whilst every care has been taken to ensure accuracy, they should not be relied upon and potential buyers/tenants are advised to recheck the measurements.

