

## PERIOD HOMES

By Simon Miller



### Lower Road

East Farleigh, Maidstone ME15 0JL

- Stunning Detached Building With Planning Permission
- Beautiful Elevated Position Adjacent Church and Overlooking The River Medway
- Currently A Venue For Hire With First-Fixed Residential Conversion Over
- Available With Large Parking Area To Front

**Offers In Excess Of £750,000 Freehold**



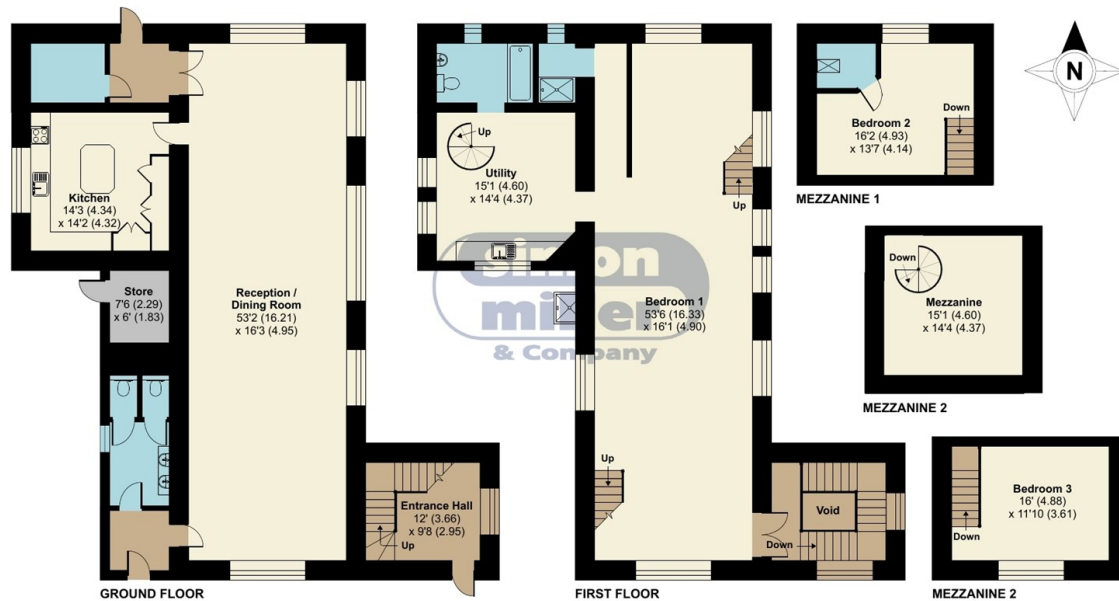


Local Authority Maidstone  
Borough Council  
Council Tax Band C  
EPC Rating

## Old School Hall, Lower Road, East Farleigh, Maidstone, ME15

Approximate Area = 3306 sq ft / 307.1 sq m (includes store / void)

For identification only - Not to scale



Floor plan produced in accordance with RICS Property Measurement Standards incorporating International Property Measurement Standards (IPMS2 Residential). © richcom 2022. Produced for Simon Miller & Company. REF: 892089

**Period Homes by Simon Miller Office**  
Weald, 5 High Street, Headcorn, Ashford,  
Kent, TN27 9NH

**Contact**  
01622 850888  
[admin@periodhomesbysimonmiller.co.uk](mailto:admin@periodhomesbysimonmiller.co.uk)  
<https://simonmiller.co.uk/period-homes/>

Agents Note: Whilst every care has been taken to prepare these particulars, they are for guidance purposes only. All measurements are approximate and for general guidance purposes only and whilst every care has been taken to ensure accuracy, they should not be relied upon and potential buyers/tenants are advised to recheck the measurements.

