



Offers In The Region Of
£260,000

28 Hedley Street, Maidstone, ME14 1UG

Hedley Street, Maidstone, ME14

Approximate Area = 713 sq ft / 66.2 sq m

For identification only - Not to scale



Floor plan produced in accordance with RICS Property Measurement 2nd Edition, incorporating International Property Measurement Standards (IPMS2 Residential). © nchecom 2025. Produced for Simon Miller & Company. REF: 1277139

We love houses

TAKE A LOOK AT: WWW.SIMONMILLER.CO.UK

The Property Ombudsman

APPROVED CODE
TRADINGSTANDARDS.GOV.UK

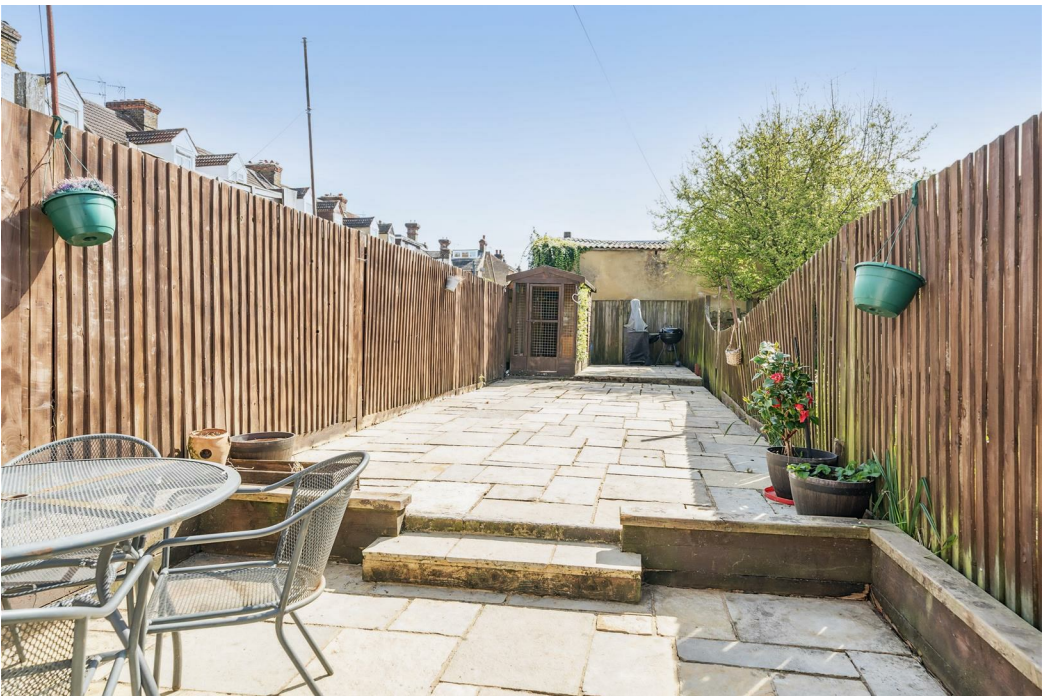
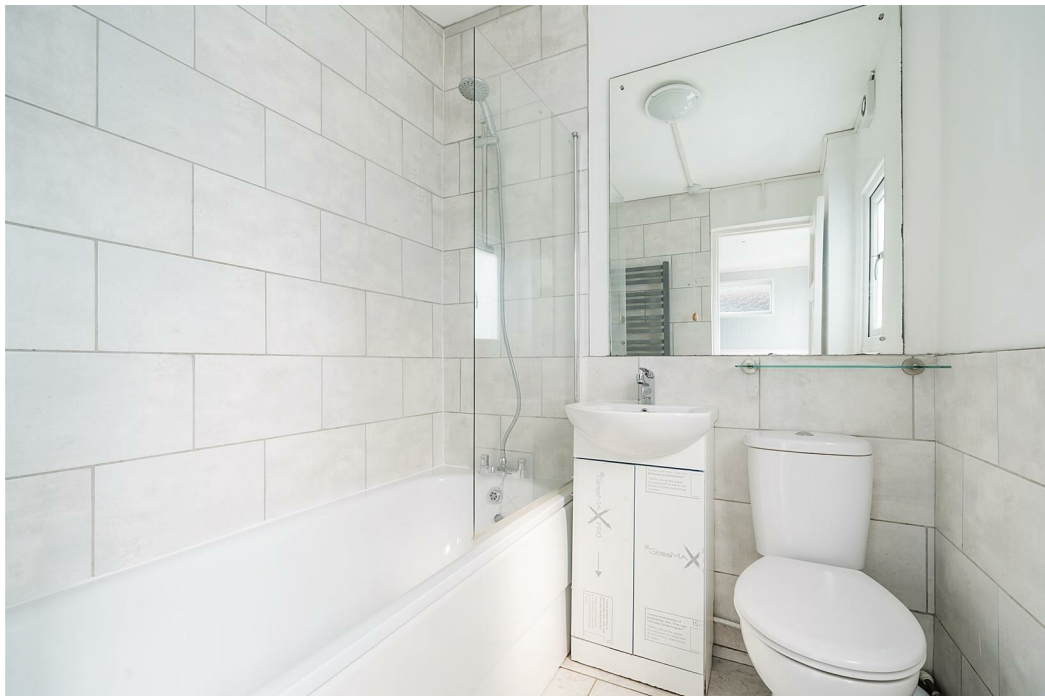


Located within easy reach of the town centre, this two double bedroom Victorian end terraced property benefits from being offered chain free. With two receptions rooms, modern kitchen and downstairs bathroom, the property also benefits from a low maintenance paved garden with small timber shed to the rear and very useful basement. The property also offers residential on street permit parking.

There is a nearby Aldi supermarket and convenience store moments away, as well as a local play area, with the centre of Maidstone a short walk away, offering a wide range of shopping and leisure facilities and mainline train stations offering regular services into London

MATERIAL INFORMATION

Freehold
Council Tax Band B
EPC Report D



• Offered Chain Free • Victorian End Terraced House • Two Double Bedrooms • Lounge and Dining Room • Gas Central Heating • Modern Fitted Kitchen and Downstairs Bathroom • Useful Basement • Well Presented Throughout

Agents Note: All dimensions are approximate and quoted for guidance only. Reference to appliances, fixtures, fittings and services does not imply that they are necessarily in good condition, fit the purpose or are in working order. Interested parties are advised to obtain verification from their Solicitors as to the Freehold/Leasehold status of the property and confirmation regarding the condition of any fixtures and fittings included in the sale.

11, COLMAN HOUSE, MAIDSTONE, KENT, ME14 1DJ | 01622 691255 | MAIDSTONESALES@SIMONMILLER.CO.UK