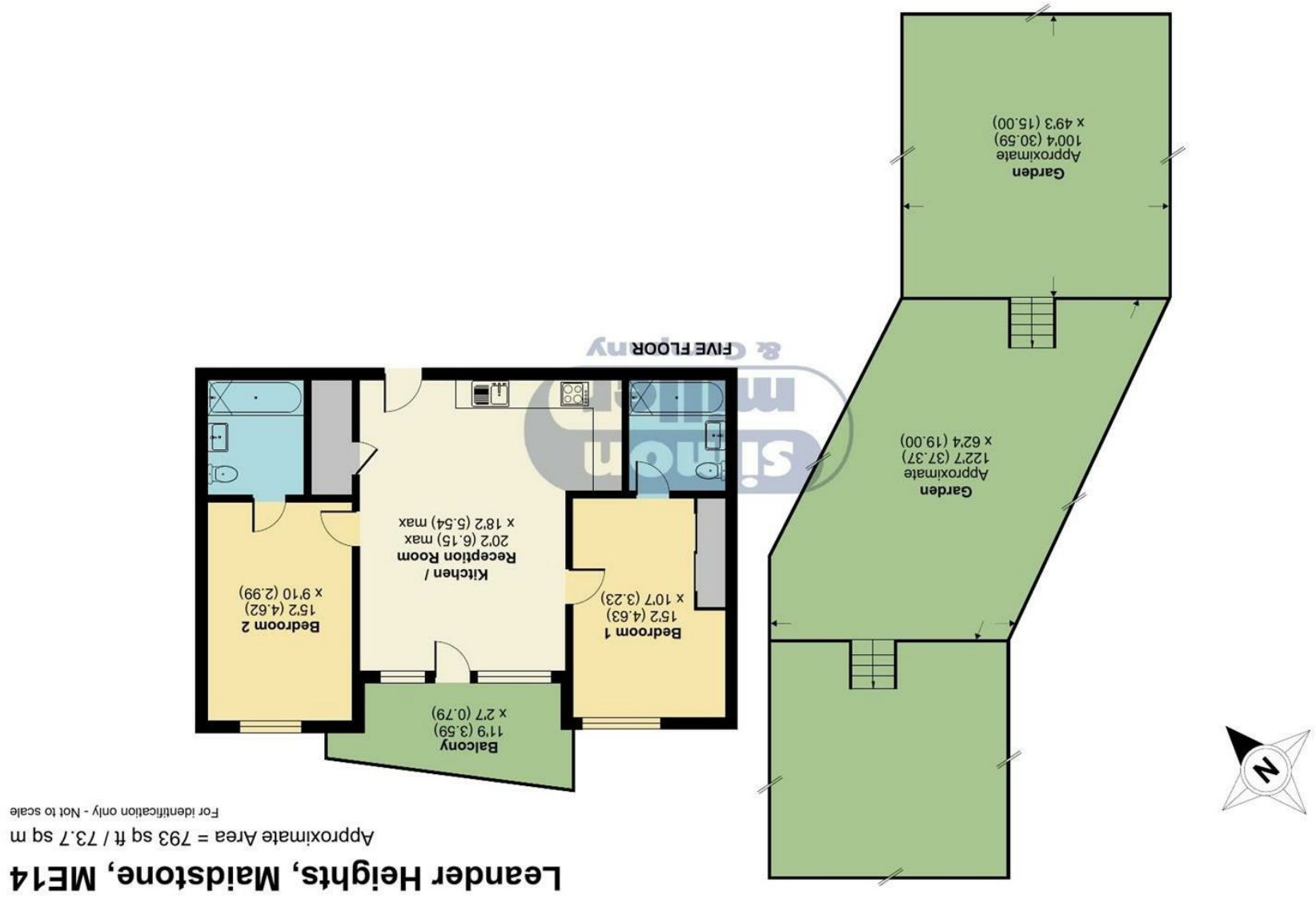


Floor plan produced in accordance with RICS Property Measurement 2nd Edition.
Incorporating International Property Measurement Standards (IPMS2 Residential).
Produced for Simon Miller & Company. REF: 1280274
© nchecom 2025.



Guide Price £260,000
EPC RATING: B

Flat 44, Leander Heights Mill Wood, Maidstone,
ME14 2FS





Welcome to this stunning newly built apartment located in the desirable Mill Wood area of Maidstone. This modern property, completed in 2023, offers a generous living space of 793 square feet, making it an ideal home for individuals or small families seeking comfort and convenience.

The apartment features two well-proportioned bedrooms, each with its own en-suite bathroom, providing both privacy and luxury. The open plan kitchen and dining room create a spacious and inviting atmosphere, perfect for entertaining guests or enjoying quiet evenings at home. Large windows allow natural light to flood the space, enhancing the overall warmth and appeal of the apartment.

Step outside onto the expansive balcony, where you can relax and take in the picturesque views overlooking the River Medway. This outdoor space is perfect for enjoying a morning coffee or unwinding after a long day.

In addition to its beautiful interiors, this property comes with allocated parking for one vehicle, ensuring convenience for residents. The location is particularly advantageous, with easy access to the nearby riverside walks, allowing for leisurely strolls along the water. Furthermore, the apartment is in close proximity to Maidstone town centre, where you will find a variety of shops, restaurants, and amenities to suit your lifestyle.

For those who commute, the property offers excellent access to the motorway, making travel to surrounding areas straightforward and efficient. This apartment is not just a home; it is a lifestyle choice in a vibrant and sought-after community. Don't miss the opportunity to make this exceptional property your own.

MATERIAL INFORMATION

Leasehold
Council Tax Band C
EPC Report B



• GUIDE PRICE £260,000 - £280,000 • Newly Built Apartment In This Sought After Development • Two Bedrooms Both With En-Suites • Large Balcony Overlooking River Medway & Whatman Park • Open Plan Kitchen/Dining Room • Allocated Parking • Nearby To Riverside Walks • Close Proximity To Maidstone Town Center • Easy Access To Motorway & Transport Links

Agents Note: All dimensions are approximate and quoted for guidance only. Reference to appliances, fixtures, fittings and services does not imply that they are necessarily in good condition, fit the purpose or are in working order. Interested parties are advised to obtain verification from their Solicitors as to the Freehold/Leasehold status of the property and confirmation regarding the condition of any fixtures and fittings included in the sale.

11, COLMAN HOUSE, MAIDSTONE, KENT, ME14 1DJ | 01622 691255 | MAIDSTONESALES@SIMONMILLER.CO.UK