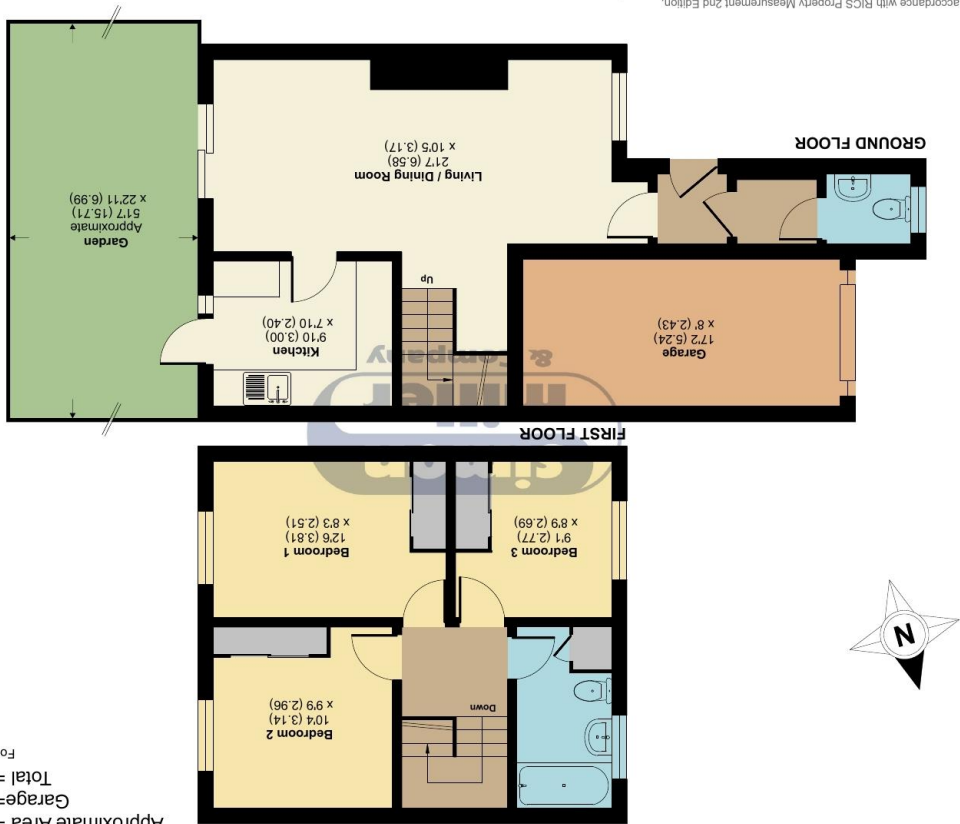


Floor plan produced in accordance with RICS Property Measurement 2nd Edition, incorporating International Property Measurement Standards (IPMS2 Residential). © rickcom 2025. Produced for Simon Miller & Company. REF: 1293485



Bronte Close, Larkfield, Aylesford, ME20

7 Bronte Close, Larkfield, Kent, ME20 6UT

GUIDE PRICE: £350,000-£370,000

EPC RATING: D





Situated on the ever-popular Bronte Close within the desirable Poets Development, this bright and airy three-bedroom semi-detached home offers a fantastic opportunity to add your own personal touch in one of Larkfield's most sought-after residential areas.

Boasting a driveway and garage, this well-proportioned property features a spacious through lounge/diner, a kitchen with plenty of storage, and a convenient downstairs W/C. Upstairs, you'll find two generous double bedrooms, a good-sized single bedroom, and a modern family bathroom. The sunny rear garden provides a perfect outdoor space for relaxing or entertaining, while the home's layout and potential make it ideal for families, first-time buyers, or those looking to upsize.

Larkfield is a thriving and well-connected village offering an excellent blend of suburban comfort and local convenience. Residents enjoy a great selection of schools, shops, and leisure facilities, as well as easy access to transport links including the M20 and nearby railway stations for London commuters. The area is also surrounded by green spaces and scenic countryside walks, making it perfect for families and outdoor enthusiasts alike.

Freehold
EPC: D
Council Tax: D
Full Fibre Broadband Available Now



- **THREE BEDROOM SEMI DETACHED FAMILY HOME**
- **DRIVEWAY & GARAGE**
- **DOWNSTAIRS W/C**

- **CHAIN FREE**
- **SUNNY REAR GARDEN**
- **WITHIN WALKING DISTANCE OF SCHOOLS & AMENITIES**

TAKE A LOOK AT: WWW.SIMONMILLER.CO.UK

AM4565080525

MR0856/180615/050815/051015LE

Agents Note: All dimensions are approximate and quoted for guidance only. Reference to appliances, fixtures, fittings and services does not imply that they are necessarily in good condition, fit the purpose or are in working order. Interested parties are advised to obtain verification from their Solicitors as to the Freehold/Leasehold status of the property and confirmation regarding the condition of any fixtures and fittings included in the sale.

777-779 LONDON ROAD, LARKFIELD, AYLESFORD, KENT, ME20 6DE | 01732 875 706 | LARKFIELDSALES@SIMONMILLER.CO.UK