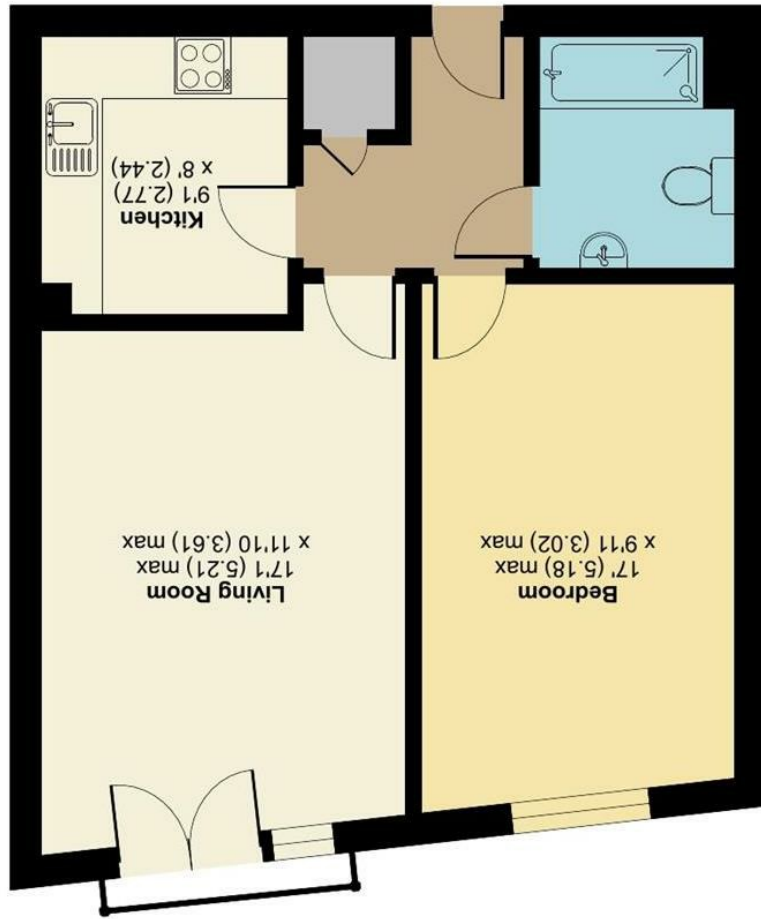


GROUND FLOOR



Approximate Area = 568 sq ft / 52.8 sq m  
For identification only - Not to scale

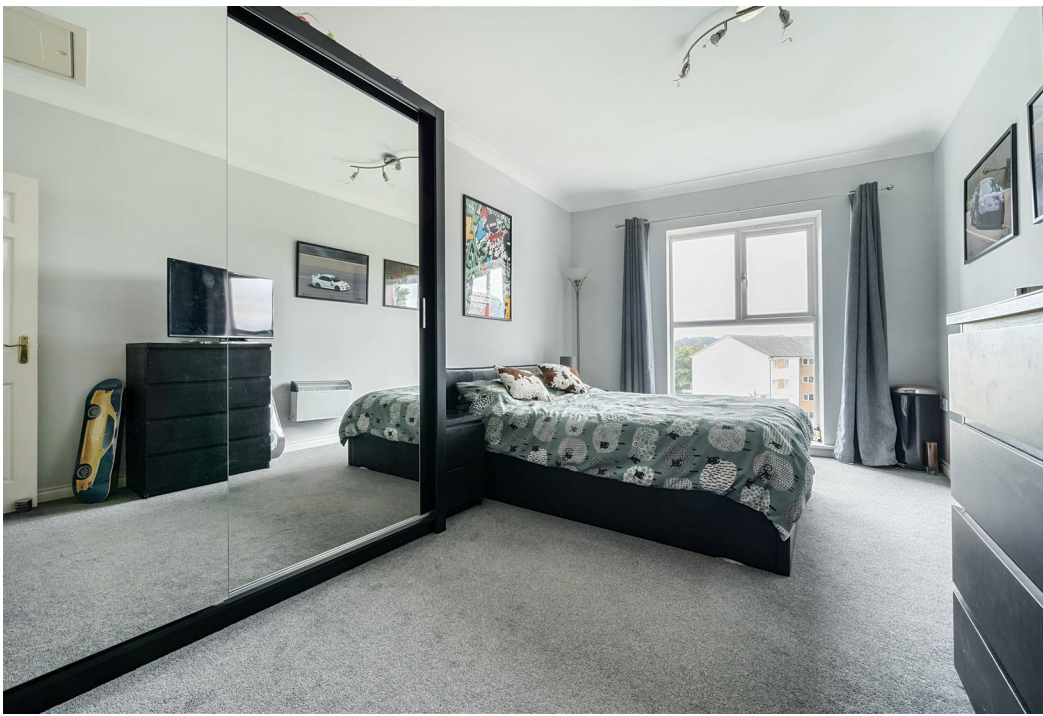
Lee Heights, Bambridge Court, Maidstone, ME14

Offers Around £180,000  
EPC RATING: D

Lee Heights Bambridge Court, Maidstone, ME14  
2LG







Simon Miller and Company are delighted to offer to the market this immaculately presented One double bedroom apartment which is located within walking distance of the town and mainline train stations.

The property is presented very well throughout. There really is no work to be done here so you can move straight in!

The apartment is made up of a large lounge dining area, modern fitted kitchen, family bathroom, 1 double bedrooms and ample storage.

The lounge dining room is generous in size and offers a Juliet balcony making it also very bright and airy. The bespoke kitchen has ample storage space and offers plenty of room for the necessary utilities.

The bedroom is also a good size with a large floor to ceiling window.

### MATERIAL INFORMATION

**Leasehold**  
**Council Tax Band C**  
**EPC Report D**



- One double bedroom apartment
- **PROPERTY WALKAROUND VIDEO AVAILABLE**
- Immaculate decor throughout
- Allocated parking
- Modern fitted kitchen
- Storage and loft space
- Close to town and mainline train stations
- Low Service charge and Ground rent
- High Ceiling & Juliette Balcony

Agents Note: All dimensions are approximate and quoted for guidance only. Reference to appliances, fixtures, fittings and services does not imply that they are necessarily in good condition, fit the purpose or are in working order. Interested parties are advised to obtain verification from their Solicitors as to the Freehold/Leasehold status of the property and confirmation regarding the condition of any fixtures and fittings included in the sale.

11, COLMAN HOUSE, MAIDSTONE, KENT, ME14 1DJ | 01622 691255 | MAIDSTONESALES@SIMONMILLER.CO.UK