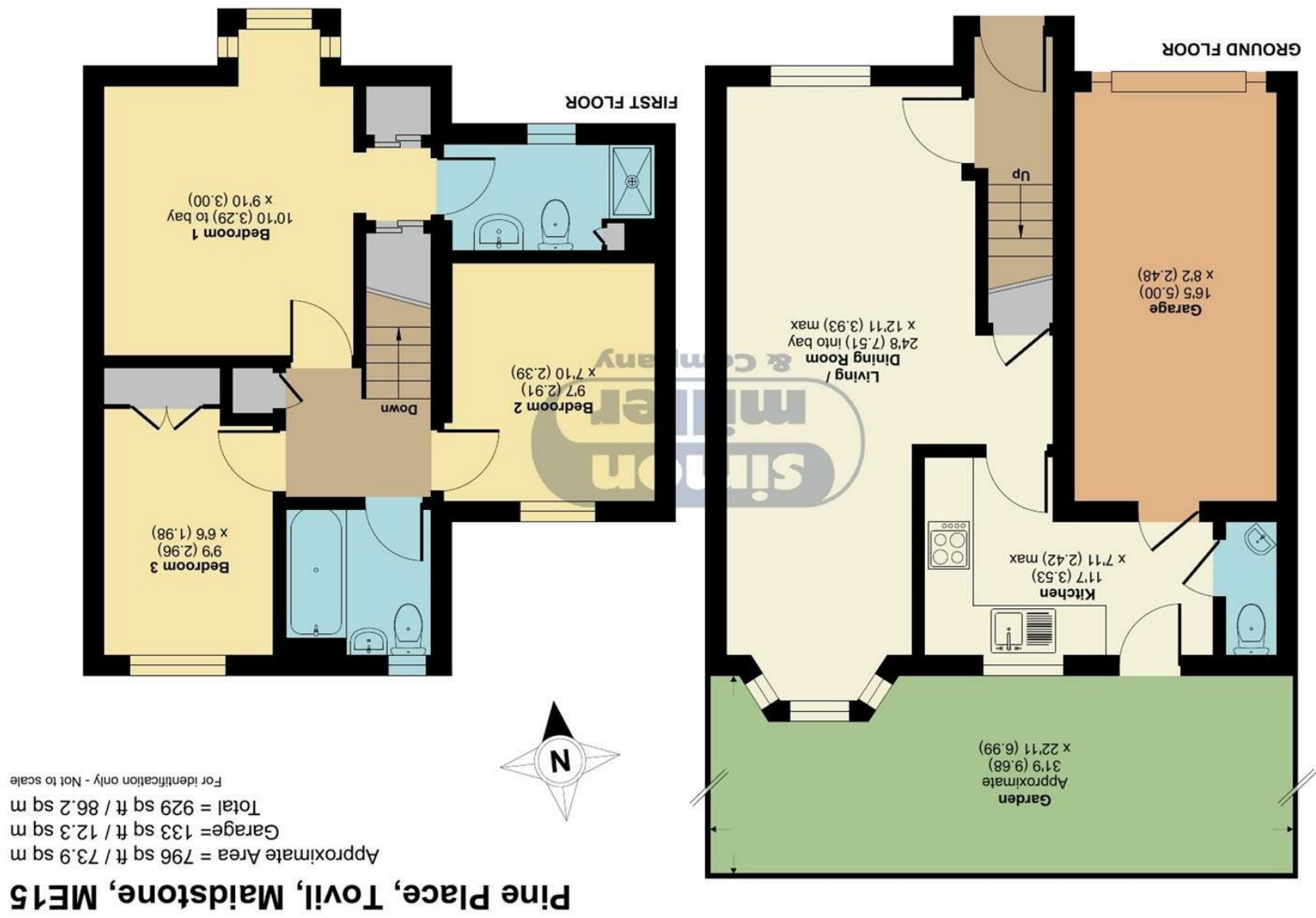


Floor plan produced in accordance with RICS Property Measurement 2nd Edition, incorporating International Property Measurement Standards (IPMS2 Residential). © nchecom 2025. Produced for Simon Miller & Company. REF: 1298163



5 Pine Place, Tovil, ME15 6EF

Guide Price £350,000
EPC RATING: C





Situated in the desirable area of Pine Place, Tovil, this charming three-bedroom end-terraced family home offers a perfect blend of comfort and convenience. Built in 1997, the property spans an impressive 929 square feet, providing ample space for family living.

Upon entering, you are greeted by a large open-plan dual reception area, ideal for both relaxation and entertaining. The layout is designed to create a warm and inviting atmosphere, perfect for family gatherings or quiet evenings at home. The property boasts a well-appointed family bathroom, along with an additional bathroom, ensuring that the needs of a busy household are met with ease.

The home features three generously sized bedrooms, each offering a peaceful retreat for rest and relaxation. The end-terrace position allows for added privacy and a sense of space, making it an ideal choice for families.

Outside, you will find a delightful garden to the rear, complete with a patio area, perfect for enjoying sunny days or hosting barbecues with friends and family. Additionally, the property includes a garage and parking for up to three vehicles, providing convenience and security for your vehicles.

Situated in a sought-after location, this home is just a stone's throw away from Maidstone Town Centre, offering a wealth of shopping, dining, and leisure options. With its excellent transport links and local amenities, this property is not only a wonderful family home but also a fantastic investment opportunity.

MATERIAL INFORMATION

Freehold
Council Tax Band D
EPC Report C



• GUIDE PRICE £350,000 - £375,000 • Three Bedroom End Terraced Family Home • Large Open Plan Dual Reception • Family Bathroom & En-Suite Shower To Master Bedroom • Downstairs WC • Garage & Off Street Parking • Well Maintained Throughout • Garden To The Rear With Patio & Lawn • Sought After Location • Close To Maidstone Town Center & Local Amenities

Agents Note: All dimensions are approximate and quoted for guidance only. Reference to appliances, fixtures, fittings and services does not imply that they are necessarily in good condition, fit the purpose or are in working order. Interested parties are advised to obtain verification from their Solicitors as to the Freehold/Leasehold status of the property and confirmation regarding the condition of any fixtures and fittings included in the sale.

11, COLMAN HOUSE, MAIDSTONE, KENT, ME14 1DJ | 01622 691255 | MAIDSTONESALES@SIMONMILLER.CO.UK