



Waterlow Road , Maidstone ME14 2TP

- CHAIN FREE
- Set Out Over Three Floors With Cellar
 - Low Maintenance Rear Garden
 - Easy Access To Motorway Links
- Two Bedroom Terraced Home
 - Close to Train Stations
 - Close To Local Amenities
 - Sought After Location

£260,000 Freehold

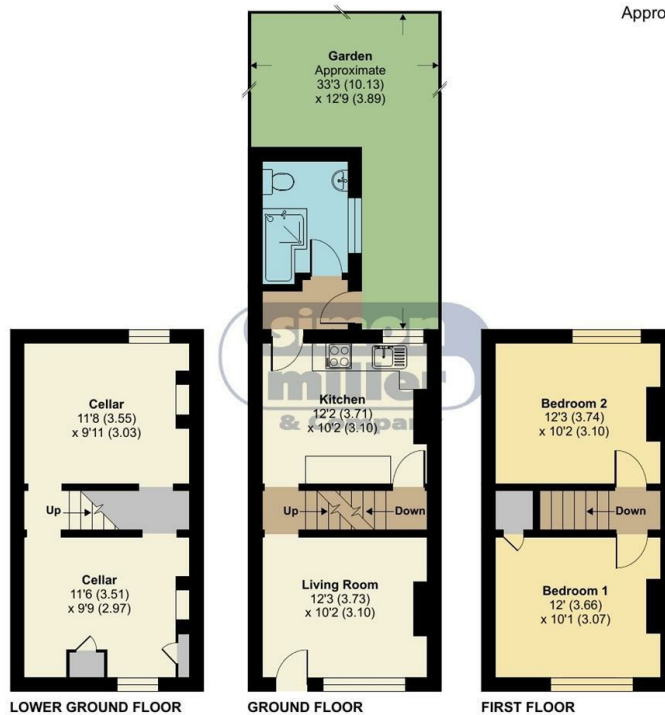


Local Authority
Council Tax Band B
EPC Rating E

Waterlow Road, Maidstone, ME14

Approximate Area = 952 sq ft / 88.4 sq m

For identification only - Not to scale



Floor plan produced in accordance with RICS Property Measurement 2nd Edition, incorporating International Property Measurement Standards (IPMS2 Residential). © nichecom 2025. Produced for Simon Miller & Company. REF: 1309211

Maidstone & The Weald Office

11 Colman House, Colman Parade, King
Street, Maidstone, Kent, ME14 1DJ

Contact

01622 691255
maidstonesales@simonmiller.co.uk

Agents Note: Whilst every care has been taken to prepare these particulars, they are for guidance purposes only. All measurements are approximate and for general guidance purposes only and whilst every care has been taken to ensure accuracy, they should not be relied upon and potential buyers/tenants are advised to recheck the measurements.

