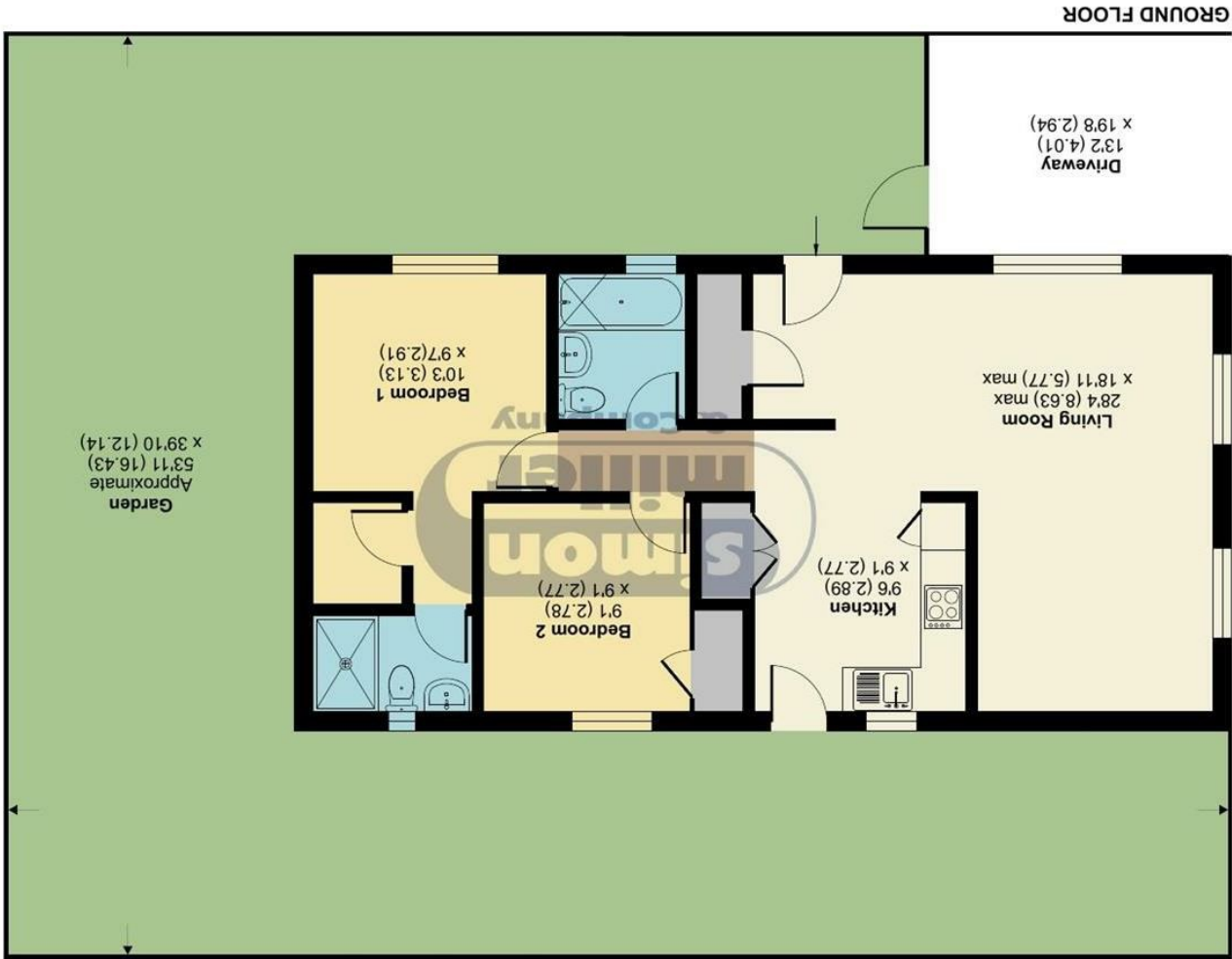


Floor plan produced in accordance with RICS Property Measurement 2nd Edition, incorporating International Property Measurement Standards (IPMS2 Residential). © ncthecom 2025. Produced for Simon Miller & Company. REF: 1312213



Approximate Area = 760 sq ft / 70.6 sq m
For identification only - Not to scale

Bletchenden Road, Headcorn, Ashford, TN27



25 Shenley Park Bletchenden Road, Ashford, TN27
9JA

Asking Price £230,000
EPC RATING:





Located in this popular fully residential park is this brand new Prestige Sonnet 40' x 20' park home. Presented in very good condition throughout, with spacious open plan living, fully fitted kitchen and en-suite and family bathrooms serving the two double bedrooms, this beautifully presented home offers LPG gas central heating and double glazing throughout, private, low maintenance gardens and parking for one car to the front.

Shenley Park is located approximately one mile from the village of Headcorn, with it's wide range of shops and restaurants and mainline train station with services to London Charing Cross. With bus stops located at the corner of the park, giving easy access to both Headcorn and Tenterden, this fully licensed residential park is one of the most popular in the local area.

MATERIAL INFORMATION

Council Tax Band
EPC Report



- Brand New 40' x 20' Prestige Sonnet Park Home • Open Plan Living • POPULAR FULLY RESIDENTIAL PARK • Two Double Bedrooms • En-Suite & Three Piece Bathroom • LPG Central Heating • Parking for One Car • Warranty Available • Close to Headcorn Village

Agents Note: All dimensions are approximate and quoted for guidance only. Reference to appliances, fixtures, fittings and services does not imply that they are necessarily in good condition, fit the purpose or are in working order. Interested parties are advised to obtain verification from their Solicitors as to the Freehold/Leasehold status of the property and confirmation regarding the condition of any fixtures and fittings included in the sale.

11, COLMAN HOUSE, MAIDSTONE, KENT, ME14 1DJ | 01622 691255 | MAIDSTONESALES@SIMONMILLER.CO.UK