



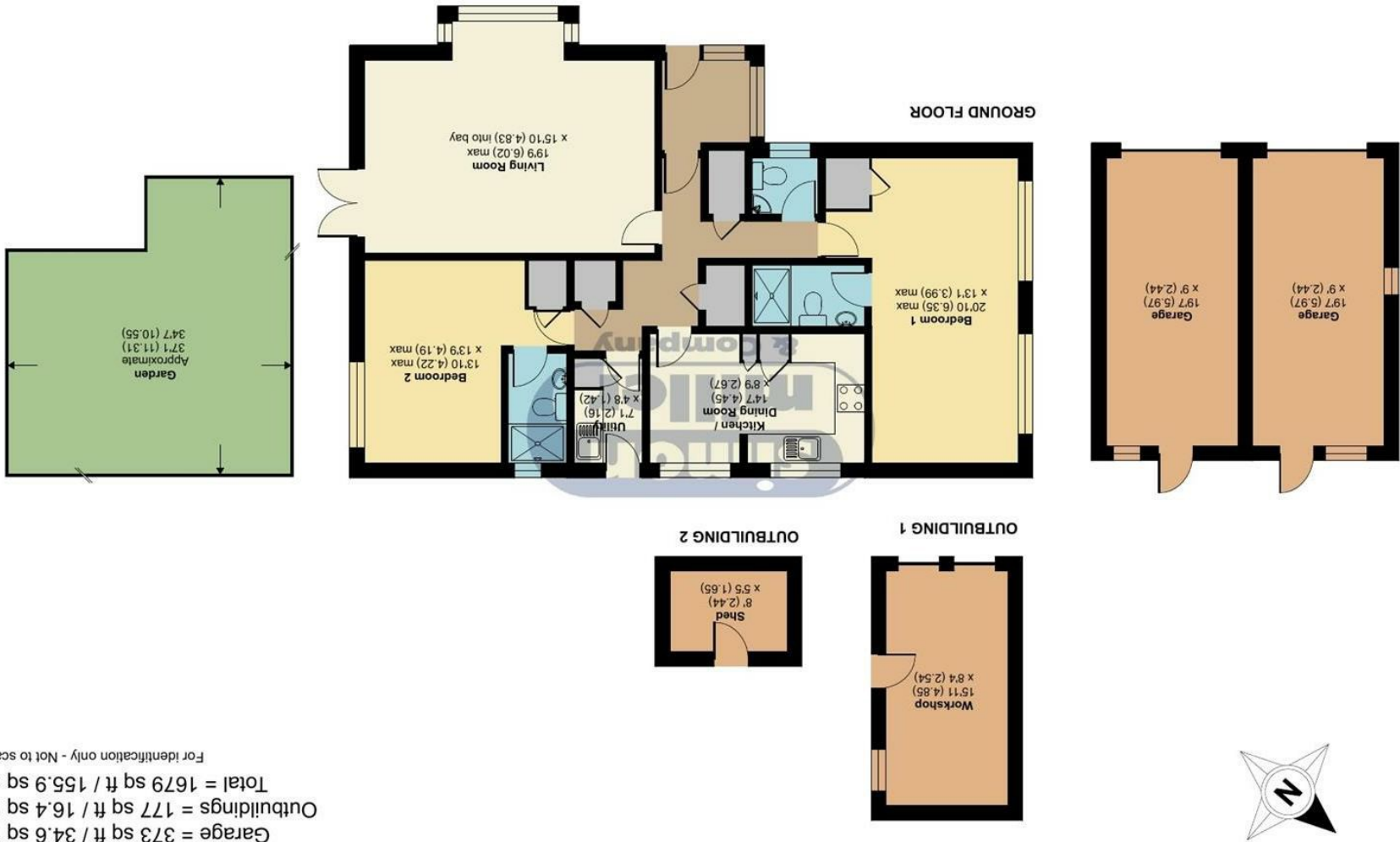
20 Regent Drive, Maidstone, ME15 6DG

Asking Price £500,000  
EPC RATING: D

Regent Drive, Maidstone, ME15

Approximate Area = 1129 sq ft / 104.8 sq m  
Garage = 373 sq ft / 34.6 sq m  
Outbuildings = 177 sq ft / 16.4 sq m  
Total = 1679 sq ft / 155.9 sq m

For identification only - Not to scale







A truly fantastic opportunity to secure your perfect new home, in the form of this stunning detached bungalow on a large corner plot.

This wonderful and unique bungalow is located in a popular area of Loose, Maidstone. The Bungalow itself is beautifully presented and offers spacious accommodation throughout. There is a large living area, separate kitchen with useful additional utility room. Both bedrooms have ensuite bathrooms as well as an additional WC. There is a double Garage and additional garage used a workshop together with off street parking for several cars. A couple of minutes from the property you find yourself in the Loose conversation area, where you can walk through woodland and find yourself in the green Loose Valley.

Lovely walks along the valley can take you to the local pub for good food and wine at the Chequers Inn adjacent to the duck pond in Loose Village.

Within walking distance is a Sainsbury local, chemist, doctors and hairdressers as well as a beauty salon.

MATERIAL INFORMATION

MATERIAL INFORMATION

Freehold  
Council Tax Band D  
EPC Report D



- Lovely Two Bedroom Detached Bungalow • Both Bedrooms En-Suites • Close To Local Shops & Amenities • Well Presented Throughout • Sought After Location • Detached Double Garage

Agents Note: All dimensions are approximate and quoted for guidance only. Reference to appliances, fixtures, fittings and services does not imply that they are necessarily in good condition, fit the purpose or are in working order. Interested parties are advised to obtain verification from their Solicitors as to the Freehold/Leasehold status of the property and confirmation regarding the condition of any fixtures and fittings included in the sale.

11, COLMAN HOUSE, MAIDSTONE, KENT, ME14 1DJ | 01622 691255 | MAIDSTONESALES@SIMONMILLER.CO.UK