



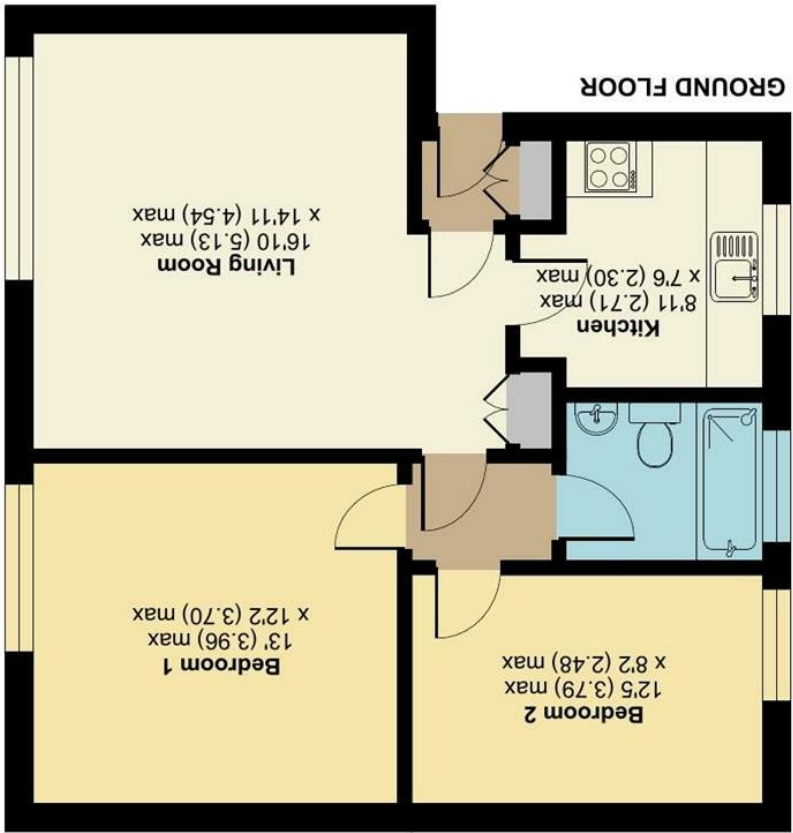
# 75 Pine Lodge Tonbridge Road, Maidstone, ME16 8TB

Guide Price £170,000  
EPC RATING: B

Tonbridge Road, Maidstone, ME16

Approximate Area = 665 sq ft / 61.7 sq m

For identification only - Not to scale



Floor plan produced in accordance with RICS Property Measurement 2nd Edition, incorporating International Property Measurement Standards (IPMS2 Residential). © nchecom 2025. Produced for Simon Miller & Company. REF: 1309469



TAKE A LOOK AT: [WWW.SIMONMILLER.CO.UK](http://WWW.SIMONMILLER.CO.UK)







Situated in the desirable Barming area of Maidstone, this charming two-bedroom purpose-built apartment offers a wonderful opportunity for both first-time buyers and investors alike. Constructed between 1970 and 1979, the property boasts a classic design that has stood the test of time, providing a comfortable and inviting living space.

Upon entering, you will find a well-proportioned reception room, perfect for relaxing or entertaining guests. The apartment features two spacious bedrooms, allowing for ample personal space or the possibility of a home office. The bathroom is conveniently located, catering to the needs of modern living.

One of the standout features of this property is its chain-free status, making the buying process smoother and more straightforward. Additionally, permit parking is available, ensuring that you have a designated space for your vehicle in this sought-after location.

The apartment is ideally situated with easy access to motorway links, making commuting a breeze. For those who prefer public transport, Maidstone West Train Station is just a short distance away, providing excellent connections to London and beyond. Furthermore, the vibrant Maidstone Town Centre is nearby, offering a variety of shops, restaurants, and leisure facilities to enjoy.

### MATERIAL INFORMATION

**Leasehold**  
**Council Tax Band B**  
**EPC Report B**



• GUIDE PRICE £170,000 - £180,000 • CHAIN FREE • Two Bedroom Purpose Built Apartment • Permit Parking • Sought After Barming Location • Easy Access To Motorway Links • Close To Maidstone West Train Station • Maidstone Town Center Nearby

Agents Note: All dimensions are approximate and quoted for guidance only. Reference to appliances, fixtures, fittings and services does not imply that they are necessarily in good condition, fit the purpose or are in working order. Interested parties are advised to obtain verification from their Solicitors as to the Freehold/Leasehold status of the property and confirmation regarding the condition of any fixtures and fittings included in the sale.

11, COLMAN HOUSE, MAIDSTONE, KENT, ME14 1DJ | 01622 691255 | MAIDSTONESALES@SIMONMILLER.CO.UK