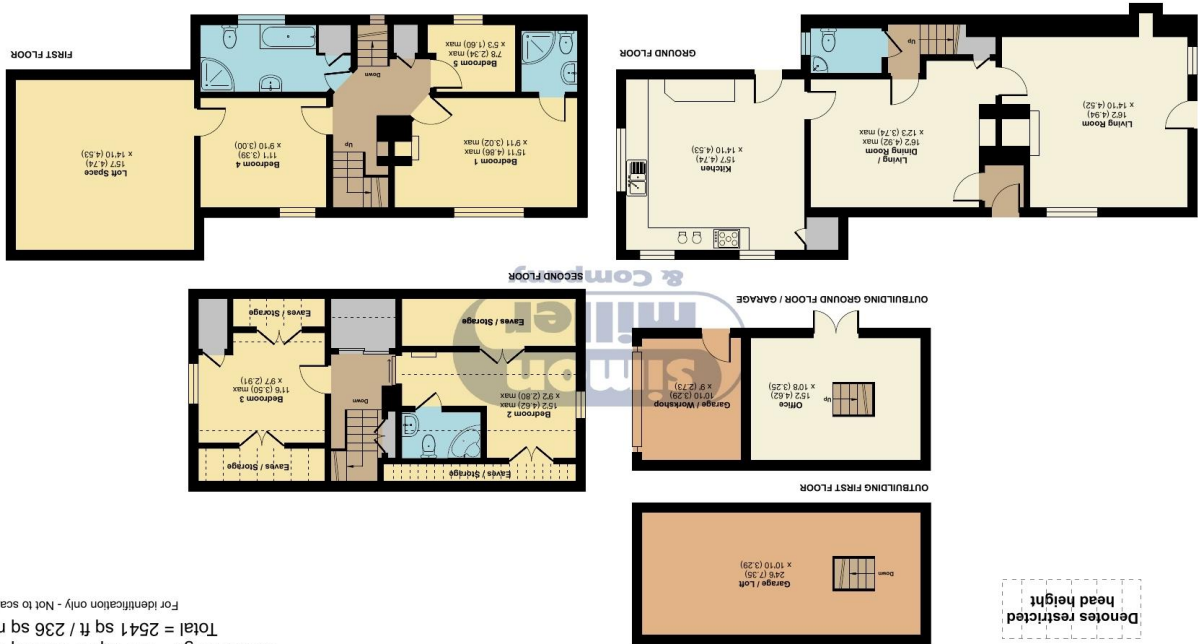


Floor plan produced in accordance with RICS Property Measurement 2nd Edition, incorporating International Property Measurement Standards (IPMS Residential). © redhcom 2025. REF: 1329332
Produced for Simon Miller & Company.



High Street, Yalding, Maidstone, West Malling, ME18

The Tatt, High Street, Yalding, Kent, ME18 6HT

GUIDE PRICE: £650,000-£680,000
EPC RATING: D





A wonderful example of a 16th century detached period home located in the popular village of Yalding, Kent. This home has been extended over the years and now offers accommodation over 3 levels, there are four bedrooms, three spacious reception rooms, and three bathrooms plus a downstairs w/c. This property also boasts numerous period features such as, exposed timbers, floorboards and fireplaces. To the exterior is an enclosed rear garden with a converted garage/office and a driveway and parking. The property is situated in a secluded position in the heart of Yalding. The village has excellent local amenities with the County town itself providing a wide range of shopping, educational and social facilities. There is a main line station at Paddock Wood which is about 10-15 minutes from the property, with regular services to London Charing Cross.

**Freehold
EPC: D
Council Tax: F
Superfast Fibre Broadband Available**



- **A 16TH CENTURY DETACHED PERIOD HOME**
- **POPULAR VILLAGE LOCATION**
- **FOUR BEDROOMS**

- **THREE BATHROOMS PLUS DOWNSTAIRS W/C**
- **CONVERTED GARAGE/OFFICE PLUS DRIVEWAY AND PARKING**
- **READY TO VIEW NOW**

TH2108180725

TAKE A LOOK AT: WWW.SIMONMILLER.CO.UK

Agents Note: All dimensions are approximate and quoted for guidance only. Reference to appliances, fixtures, fittings and services does not imply that they are necessarily in good condition, fit the purpose or are in working order. Interested parties are advised to obtain verification from their Solicitors as to the Freehold/Leasehold status of the property and confirmation regarding the condition of any fixtures and fittings included in the sale.

777-779 LONDON ROAD, LARKFIELD, AYLESFORD, KENT, ME20 6DE | 01732 875 706 | LARKFIELDSALES@SIMONMILLER.CO.UK

MR0856/180615/050815/051015LE